

360site name	Field Records					Length [m]	HF Type	Lidar-derived values						Results
	Line width [m]	Direction	Vegetation	Canopy Cover [%]	Dominant species			width [m]	direction	Line CCE mean [%]	Line cce500 mean [%]	360site CCE mean [%]	360site cce500 mean [%]	
FBS-C1-L1-F1	3.5	NS	Labrador tea, salix, black spruce, larch, bog cranberry, bog rosemary	<25	Salix	71.39	LIS	3.14	S	35.23	33.56	11.6	11.6	Correct
FBS-C1-L1-F2	4.5	NS	Labrador tea, salix, juniper, bog rosemary, small bog cranberry, black spruce, larch, blueberry	<25	Labrador tea	27.72	LIS	3.4	N	19.15	16.23	2.98	2.98	Correct
FBS-C1-L1-F8	3.5	NS	Black spruce, salix, Labrador tea, bog cranberry, larch	<25	Salix	80.28	LIS	2.75	S	37.06	22.09	23.9	18.79	Correct
FBS-C1-L4-F32	3	NS	Blueberry, Labrador tea, black spruce, jack pine, bog cranberry, salix	<25	Blueberry	8.72	LIS	4.06	NE	13.04	12.86	1.76	0.9	Correct
FBS-C1-L4-F33	3	NS	Labrador tea, blueberry, bog cranberry, jack pine, black spruce	<25	Blueberry	24.97	LIS	3.49	S	38.74	35.99	8.22	6.79	Correct
FBS-C1-L4-F34	2.5	NS	Labrador tea, leatherleaf, black spruce, larch, bog rosemary	<25	Leather leaf	66.02	LIS	2.75	S	11.63	11.33	4.8	4.74	Correct
FBS-C1-L5-F14	7	EW	Blueberry, Labrador tea, salix, jack pine, aspen	<25	Aspen	62.37	Legacy	6	W	6.11	3.52	4.17	4.17	Correct
FBS-C1-L5-F15	8.5	EW	Blueberry, Labrador tea, salix, green alder, bog cranberry, black spruce, larch	< 25	Labrador tea	105.69	Legacy	6	W	6.37	5.57	7.14	7.14	Correct
FBS-C1-L5-F40	9.5	EW	Salix, bog rosemary, bog birch, black spruce, larch, leather leaf	<25	Bog Birch	584.41	Legacy	5.88	E	1.65	1.61	0	0	Correct
FBS-C2-L2-F5	2.5	EW	Tamarack, black spruce, salix, Labrador tea, leather leaf, small bog cranberry, big bog cranberry, dwarf birch, bog rosemary	<25	Dwarf birch in natural clearing	102.91	LIS	3.75	E	36.8	35.15	6.21	6.21	Correct

FBS-C2-L2-F6	2.5	EW	Dwarf birch, Labrador tea, leather leaf, salix, bog cranberry, black spruce, tamarack	25-70	Dwarf birch/Salix	105.2	LIS	3.75	E	28.26	27.77	49.47	49.33	Correct
FBS-C2-L2-F7	2.5	EW	Salix, tamarack, black spruce, Labrador tea, leather leaf, alder, bog cranberry, dwarf birch	25-70	Alder	54.42	LIS	3.75	E	76.77	67.56	67.96	67.96	Correct
FBS-C2-L3-F10	6.5	EW	Dwarf birch, Labrador tea, black spruce, tamarack, small bog cranberry, bog cranberry, blueberry, bog rosemary, rose	<25	Dwarf birch	91.86	LIS	4.44	W	1.63	1.61	14.88	12.64	Correct
FBS-C2-L3-F11	6	EW	Tamarack, black spruce, dwarf birch, salix, bog cranberry, Labrador tea, blueberry, small bog cranberry	<25	Dwarf birch	73.87	LIS	4.21	W	4.07	3.61	13.24	10.02	Correct
FBS-C2-L3-F12	6	EW	Bog rosemary, tamarack, black spruce, Labrador tea, blueberry, bog cranberry, palmate leaved coltsfoot, bunchberry, salix	<25	Labrador tea	96.1	LIS	4.82	W	2.75	1.99	2.83	2.83	Correct
FBS-C2-L8-F3	3	NS	Labrador tea, black spruce, bog cranberry, bog rosemary, tamarack, alder, small bog cranberry	<25	Labrador tea	79.01	LIS	2.99	S	47.18	46.86	14.29	14.29	Correct
FBS-C2-L8-F4	4	NS	Salix, Labrador tea, black spruce, alder, Alaska birch, bog cranberry, bunchberry, small bog cranberry	<25	Salix	76.7	LIS	2.75	S	62.64	58.48	30.64	21.85	cce500 correct
FBS-C2-L8-F9	3.5	NS	Alder, salix, black spruce, palmate leaved coltsfoot, bog cranberry, Labrador tea, bishops cap, unknown species, leather leaf, river alder	<25	Alder	77.25	LIS	2.75	S	74.85	71.39	35.36	30.6	Correct
KOS-C1-L1-K10	N/A	NS	Jack pine, trembling aspen, bearberry, blueberry	25-70	Jack pine							34.15	35.77	Correct
KOS-C1-L1-K8	N/A	NS	Jack pine, aspen, blueberry, bearberry, rose	>70	Jack pine	69.02	Legacy	3	S	64.9	64.91	80.53	83.73	Correct

KOS-C1-L1-K9	N/A	NS	Jack pine, aspen, blueberry, bearberry	25-70	Aspen								39.91	39.44	Correct
KOS-C1-L2-K40	5.5	EW	jack pine, aspen, rose, buffaloberry, bog cranberry, blueberry, bearberry, small white spruce	25-70	Jack pine	78.53	Legacy	3	W	62.99	55.23		54.99	32.21	Correct
KOS-C1-L2-K42	7	EW	Jack pine, aspen, blueberry, rose, buffaloberry, bog cranberry, bearberry, white spruce	<25	Jack pine	84.62	Legacy	6	E-SE	34.64	6.78		18.62	6.58	Correct
KOS-C1-L2-K43	6.5	EW	Bearberry, bog cranberry, blueberry, rose, buffaloberry, aspen, white spruce, jack pine	<25	Aspen	37.5	Legacy	6	E	37.62	18.34		51.93	31.97	incorrect
KOS-C1-L2K41	6.5	EW	Jack pine, aspen, blueberry, rose, white spruce, bearberry, bog cranberry, buffaloberry	<25	Aspen	191.24	Legacy	3	E	28.83	18.96		31.39	32.21	incorrect
KOS-C1-L5-K11	9	NS	Blueberry, buffaloberry, salix, bearberry, white spruce, aspen, jack pine, rose	<25	Aspen	57.41	Legacy	3	N	27.66	12.84		47.8	43.75	incorrect
KOS-C1-L5-K12	10	NS	Rose, blueberry, white spruce, jack pine, aspen, salix	25-70	Aspen	184.57	Legacy	3	N	68.1	65.9		64.43	60	correct
KOS-C1-L5-K13	6	NS	Rose, buffaloberry, bearberry, Alaska or paper birch, jack pine, aspen	25-70	Aspen		Legacy						76.57	62.58	cce500 correct
KOS-C2-L3-K1	4.5	EW	Jack pine, bearberry, blueberry	<25	Jack pine (regen)	116.36	Legacy	3	W	57.68	55.09		28.68	24.66	cce500 correct
KOS-C2-L3-K2	5.5	EW	Jack pine, blueberry, bearberry	<25	Jack pine (regen)	73.39	Legacy	3	W	29.97	17.6		7.29	6.67	correct
KOS-C2-L3-K3	3.5	EW	Bearberry, blueberry, jack pine	25-70	Jack pine (regen)	63.15	Legacy	3	W	45.46	40.04		45.54	47.54	correct
KOS-C2-L4-K15	6	NS	Jack pine, bearberry, buffaloberry, rose, strawberry	<25	Jack pine	44.39	Legacy	7	N	23.47	5.39		4.68	1.21	correct

KOS-C2-L4-K16	6	NS	Aspen, jack pine, blueberry, honeysuckle, bunchberry, rose, snowberry, bearberry, Alaska birch, raspberry	25-75	Jack pine and Aspen							44.93	39.11	correct
KOS-C2-L4-K17	6	NS	Aspen, jack pine, blueberry, bearberry, rose, bunchberry, buffaloberry, strawberry	<25	Aspen	51.46	Legacy	7	S	29.76	15.07	16.95	3.92	correct
KOS-C2-L6-K18	8.5	NS	Bunchberry, bearberry, jack pine, blueberry, aspen, white spruce	25-75	Aspen and Jack Pine	15.1	Legacy	7.4	N-NW	51.42	46.06	46.48	43.2	correct
KOS-C2-L6-K19	9	NS	Bearberry, blueberry, rose, jack pine, aspen, strawberry, bunchberry, honeysuckle, buffaloberry	<25	Jack pine	199.62	Legacy	5.3	N	40.89	8.38	10.64	6.39	correct
KOS-C2-L6-K20	9	NS	Jack pine, aspen, bearberry, blueberry, white spruce, strawberry, rose, bunchberry, buffaloberry	<25	Jack pine	91.54	Legacy	7.4	N	32.77	26.92	15.67	13.67	correct
												correct		31
												cce500 correct		3
												incorrect		3
												total		37

**360site: FBS-C1-L5-F40**

Line segment GlobalID: {66F1E733-B19F-46FC-8B23-82866297E786}

Category: **Treatment**

Site Type: **Lowland treed**

Feature Type: **Legacy Seismic**

Line Length/Width/Direction: **584.41m/5.88m/East**

Wildlife Trail or Human Access: **Human Access Tracks**

Vegetation (field): **salix, bog rosemary, bog birch, black spruce, larch, leather leaf**

Dominant Species (field): **Bog Birch**

Canopy Cover (field): **<25%**

Canopy Cover Estimate (CCE - Lidar) on 360site/on the line: **0 / 1.65%**

Canopy Cover Estimate 500 (cce500 - Lidar) on 360site/on the line: **0 / 1.61%**

**Field photo 1:**



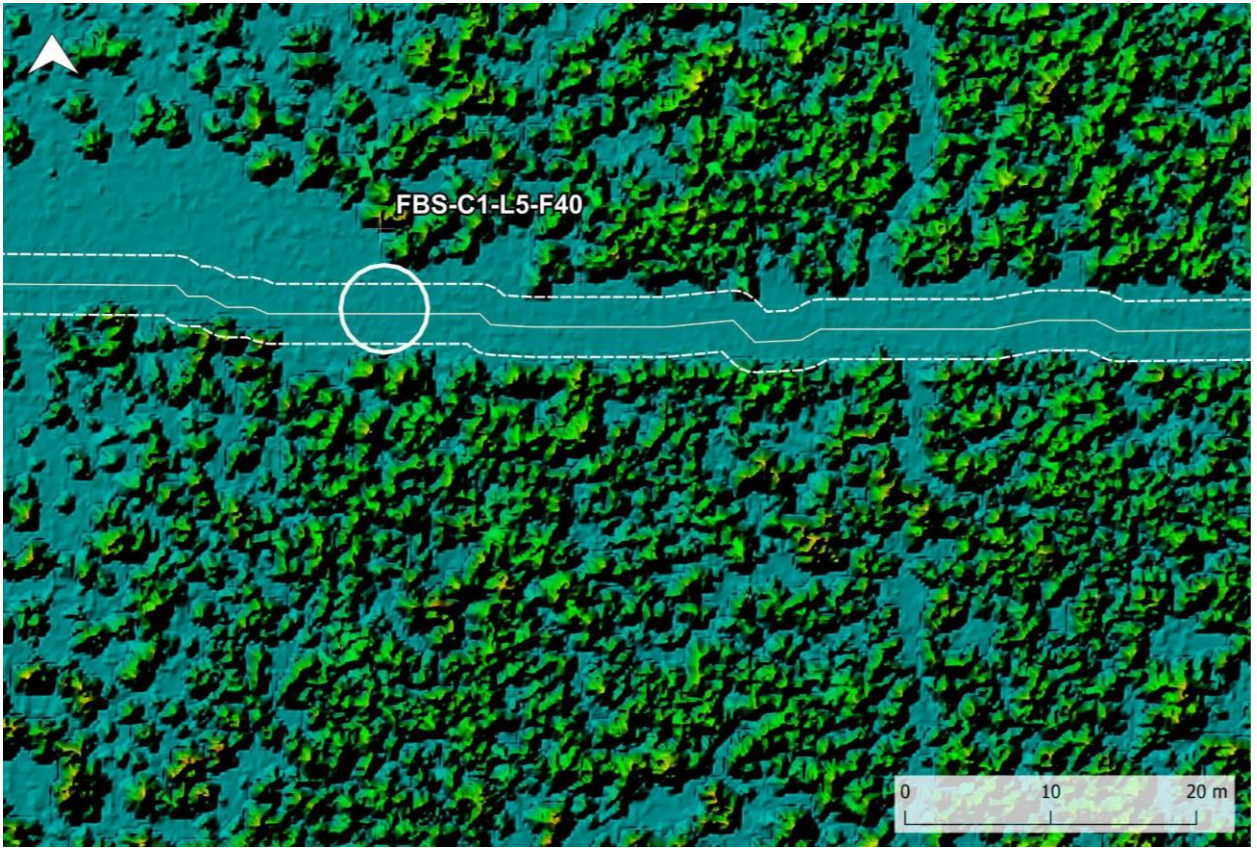
Field photo 2:



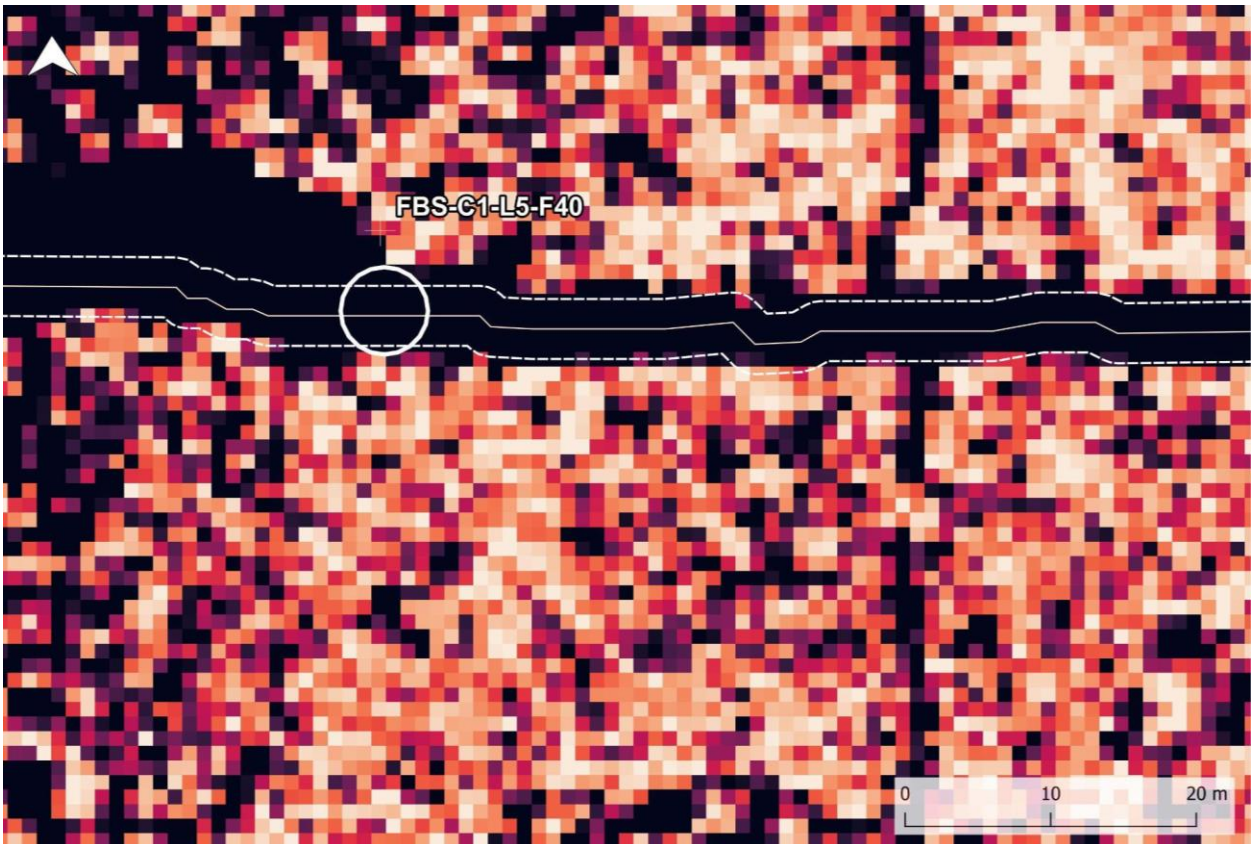
Field photo 3:



CHM Lidar:



CCE Lidar:



**360site: FBS-C1-L5-F14**

Line segment GlobalID: {0C2991F7-7564-4986-8ABD-0E25944DEF9D}

Category: **Treatment**

Site Type: **Upland Dry**

Feature Type: **Legacy Seismic**

Line Length/Width/Direction: **62.37m/6m/West**

Wildlife Trail or Human Access: **Human Access Tracks**

Vegetation (field): **blueberry, Labrador tea, salix, jack pine, aspen**

Dominant Species (field): **Aspen**

Canopy Cover (field): **<25%**

Canopy Cover Estimate (CCE - Lidar) on 360site/on the line: **4.17 / 6.11%**

Canopy Cover Estimate 500 (cce500 - Lidar) on 360site/on the line: **4.17 / 3.52%**

**Field photo 1:**



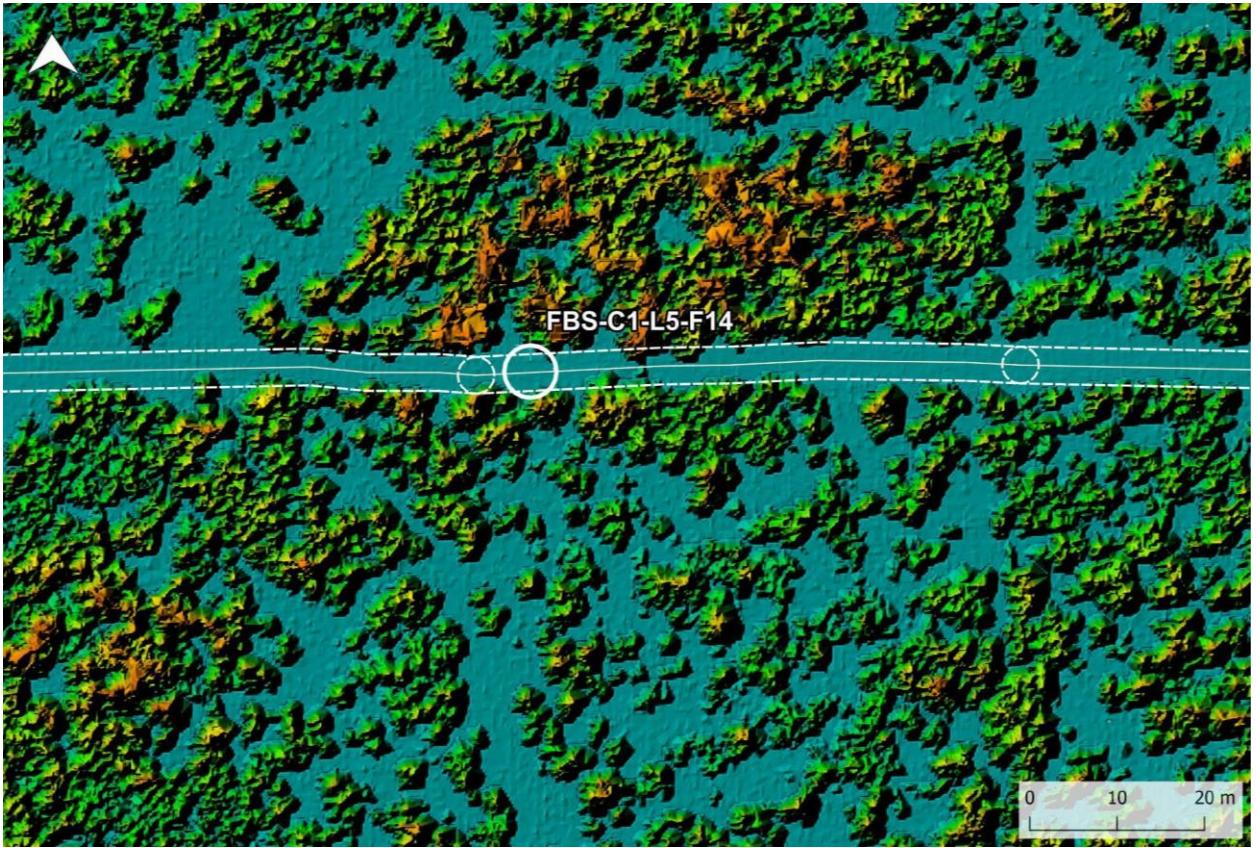
Field photo 2:



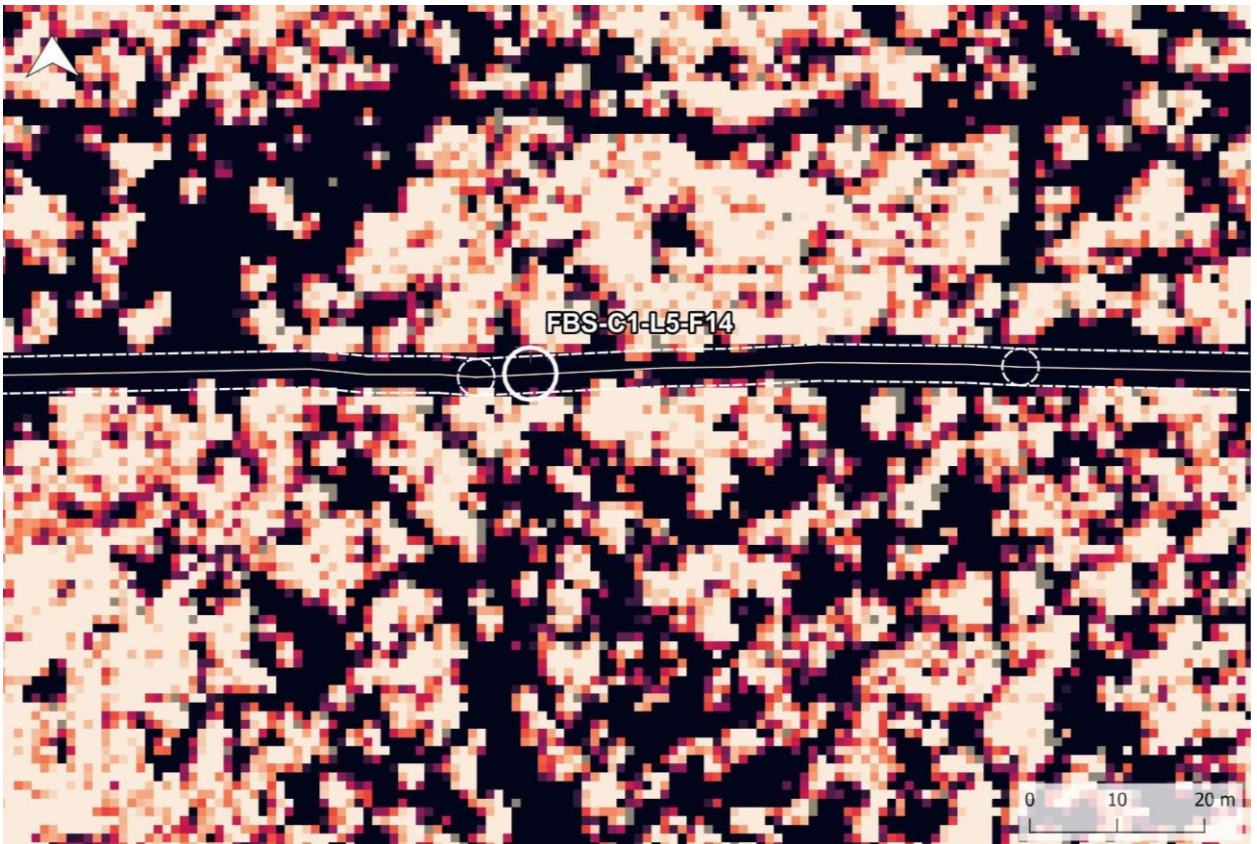
Field photo 3:



CHM Lidar:



CCE Lidar:



**360site: FBS-C1-L5-F15**

Line segment GlobalID: {10181C1D-08FB-444E-B085-8E9801D9505D}

Category: **Treatment**

Site Type: **Lowland Treed**

Feature Type: **Legacy Seismic**

Line Length/Width/Direction: **105.69m/6m/West**

Wildlife Trail or Human Access: **Human Access Tracks**

Vegetation (field): **blueberry, Labrador tea, salix, green alder, bog cranberry, black spruce, larch**

Dominant Species (field): **Labrador tea**

Canopy Cover (field): **<25%**

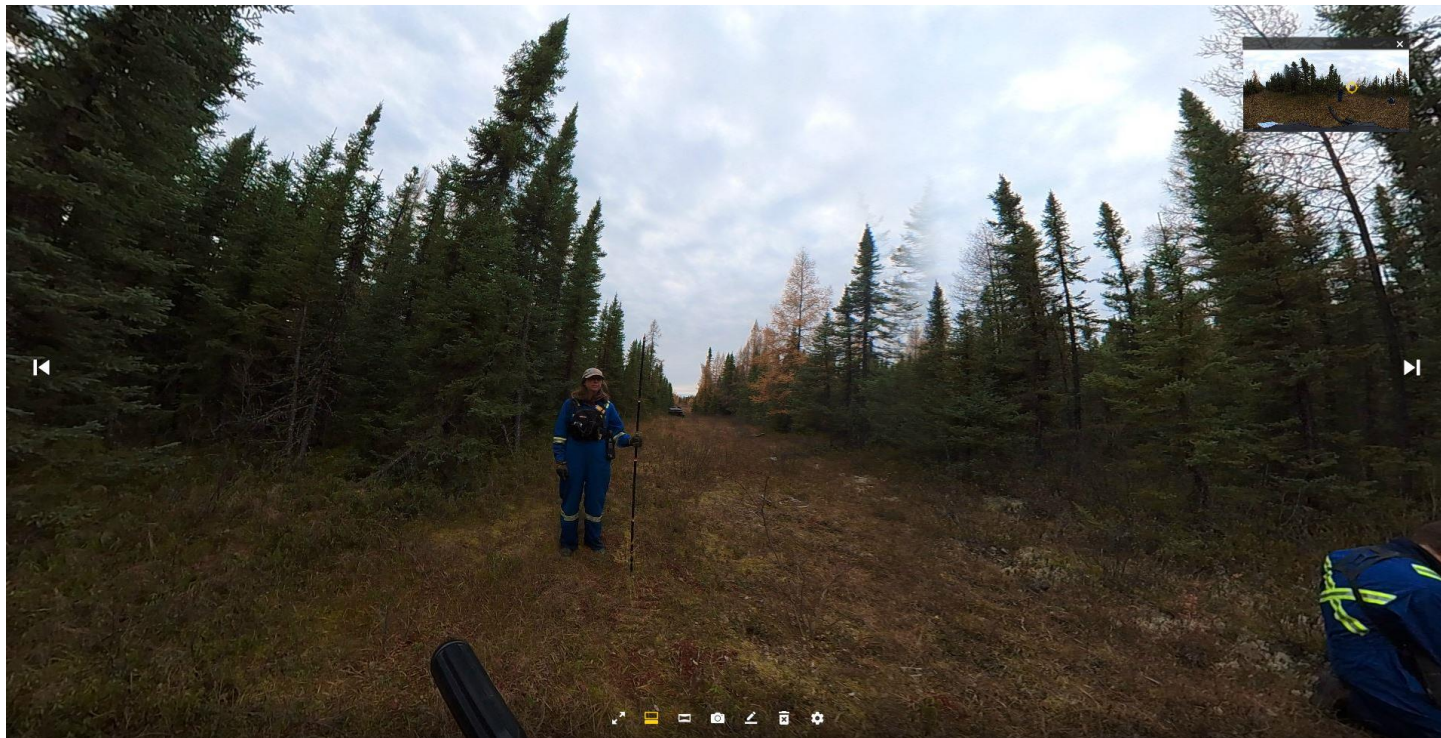
Canopy Cover Estimate (CCE - Lidar) on 360site/on the line: **7.14% / 6.37%**

Canopy Cover Estimate 500 (cce500 - Lidar) on 360site/on the line: **7.14% / 5.57%**

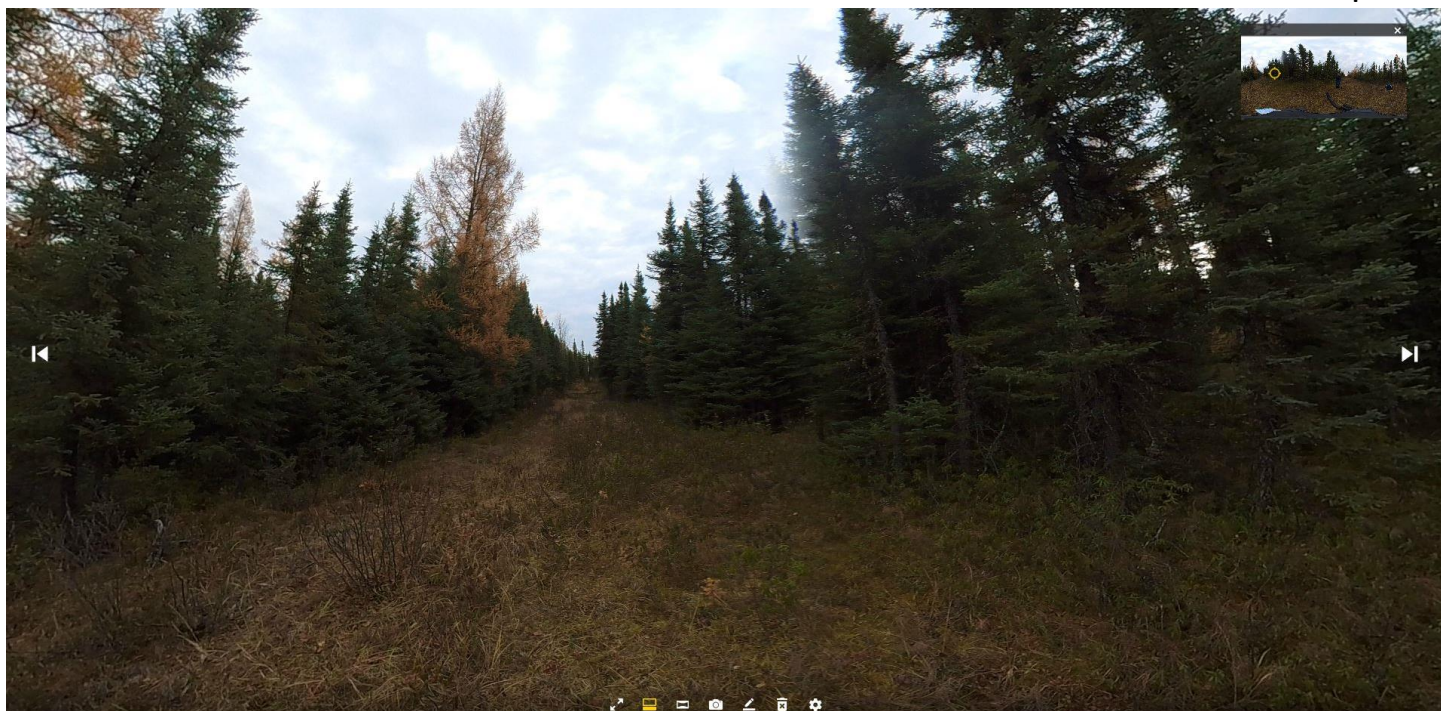
**Field photo 1:**



Field photo 2:



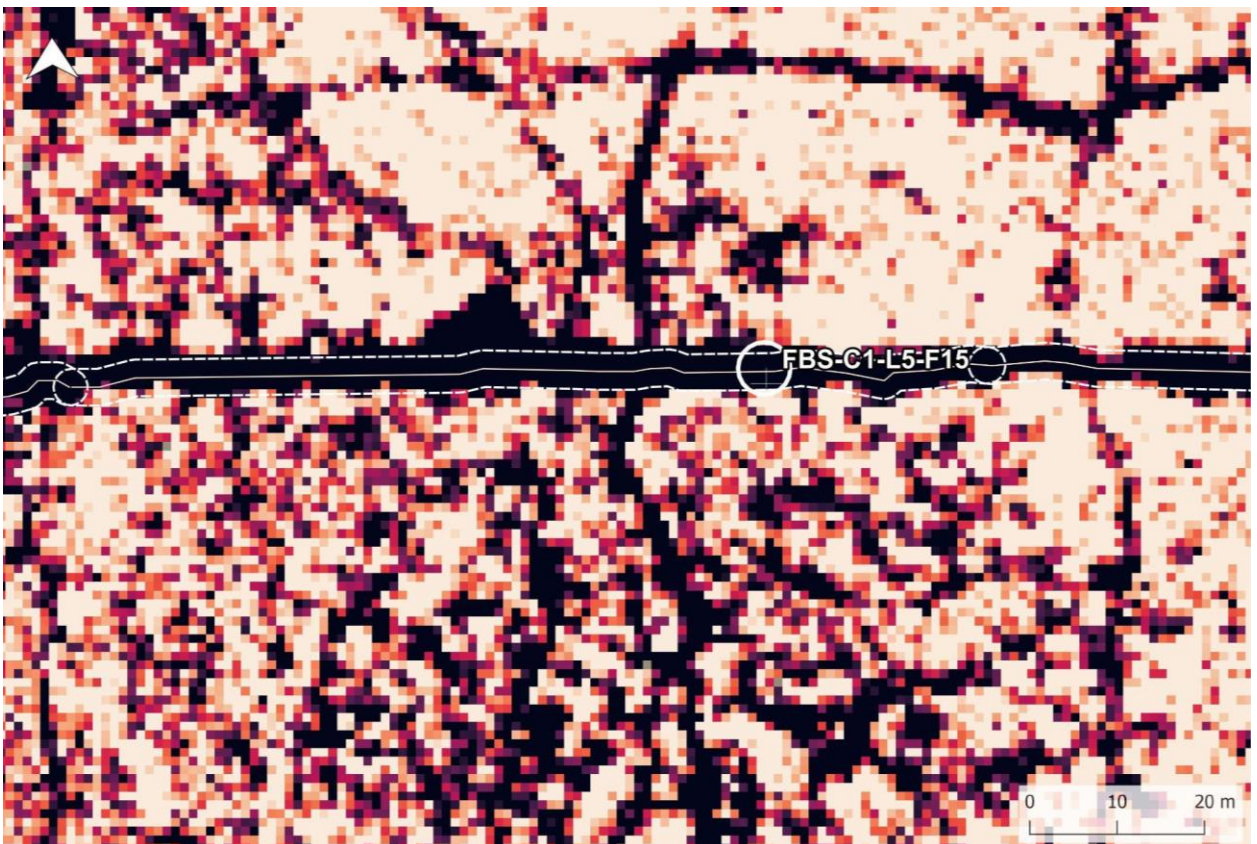
Field photo 3:



CHM Lidar:



CCE Lidar:



**360site: FBS-C1-L4-F34**

Line segment GlobalID: {E7B565B9-1423-472F-961B-903AB77527AD}

Category: **Treatment**

Site Type: **Lowland Treed**

Feature Type: **Low Impact Seismic**

Line Length/Width/Direction: **66.02m/2.75m/South**

Wildlife Trail or Human Access: **Human Access Tracks**

Vegetation (field): **blueberry, Labrador tea, salix, green alder, bog cranberry, black spruce, larch**

Dominant Species (field): **Labrador tea**

Canopy Cover (field): **<25%**

Canopy Cover Estimate (CCE - Lidar) on 360site/on the line: **4.8% / 11.63%**

Canopy Cover Estimate 500 (cce500 - Lidar) on 360site/on the line: **7.14% / 11.33%**

**Field photo 1:**



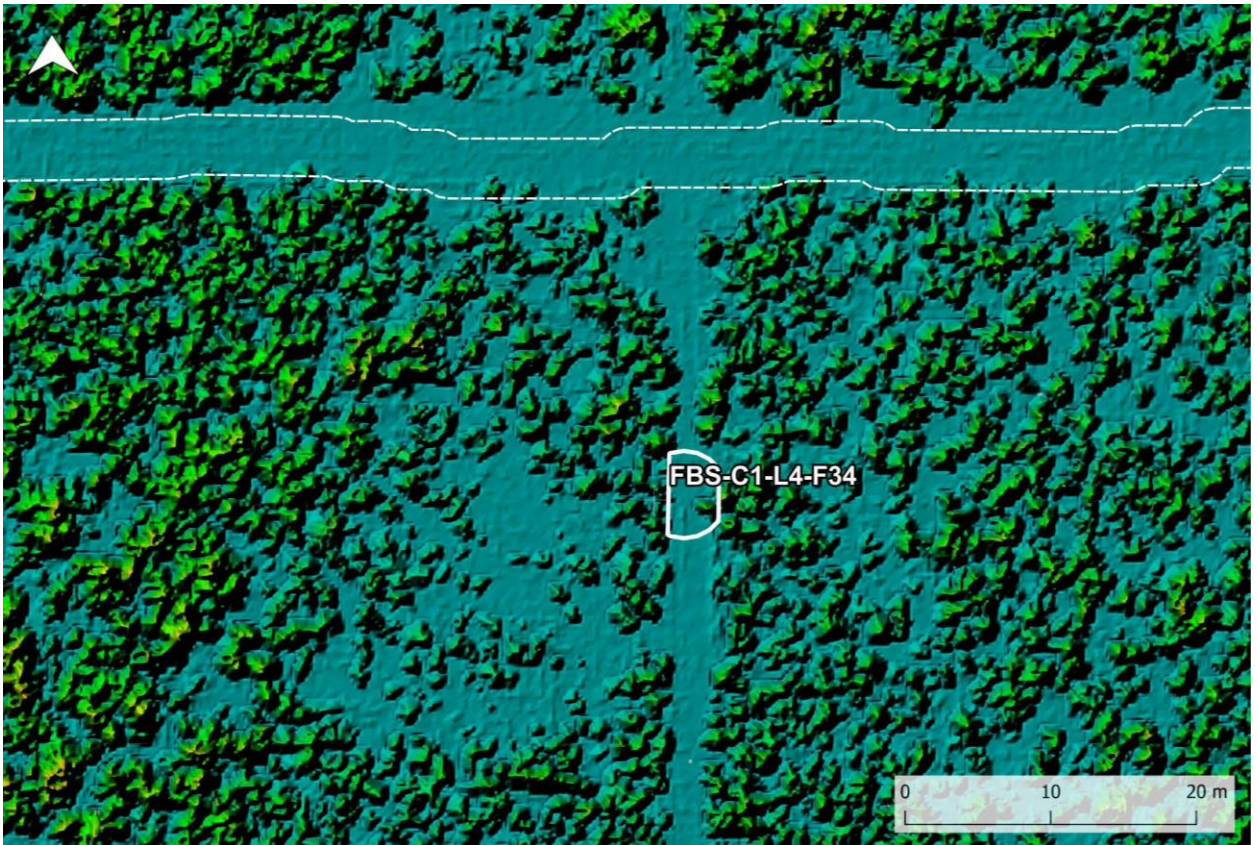
Field photo 2:



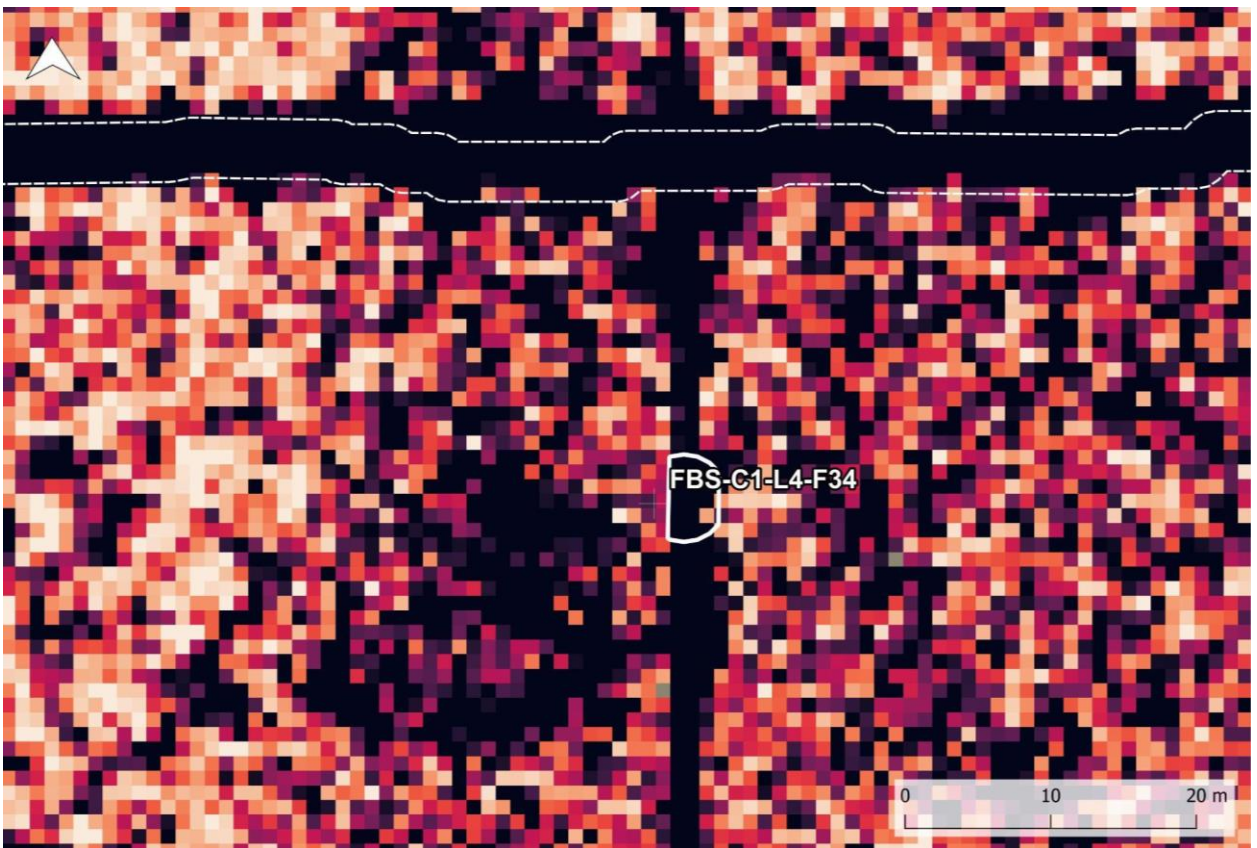
Field photo 3:



CHM Lidar:



CCE Lidar:



**360site: FBS-C1-L4-F33**

Line segment GlobalID: {6C887866-1F47-4D17-90FD-F3D4334332C7}

Category: **Treatment**

Site Type: **Upland Dry**

Feature Type: **Low Impact Seismic**

Line Length/Width/Direction: **24.97m/3.49m/South**

Wildlife Trail or Human Access: **None**

Vegetation (field): **Labrador tea, blueberry, bog cranberry, jack pine, black spruce**

Dominant Species (field): **Blueberry**

Canopy Cover (field): **<25%**

Canopy Cover Estimate (CCE - Lidar) on 360site/on the line: **8.22% / 38.74%**

Canopy Cover Estimate 500 (cce500 - Lidar) on 360site/on the line: **6.79% / 35.99%**

**Field photo 1:**



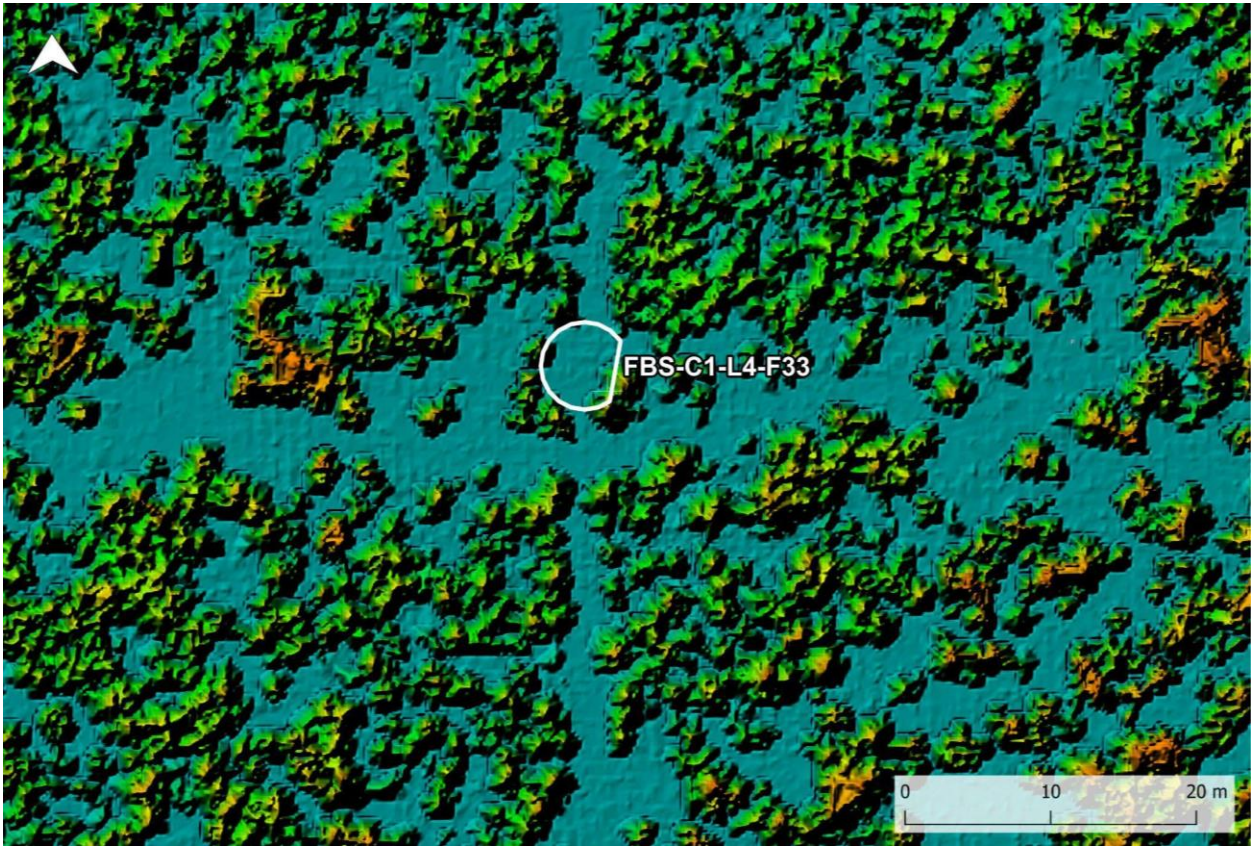
Field photo 2:



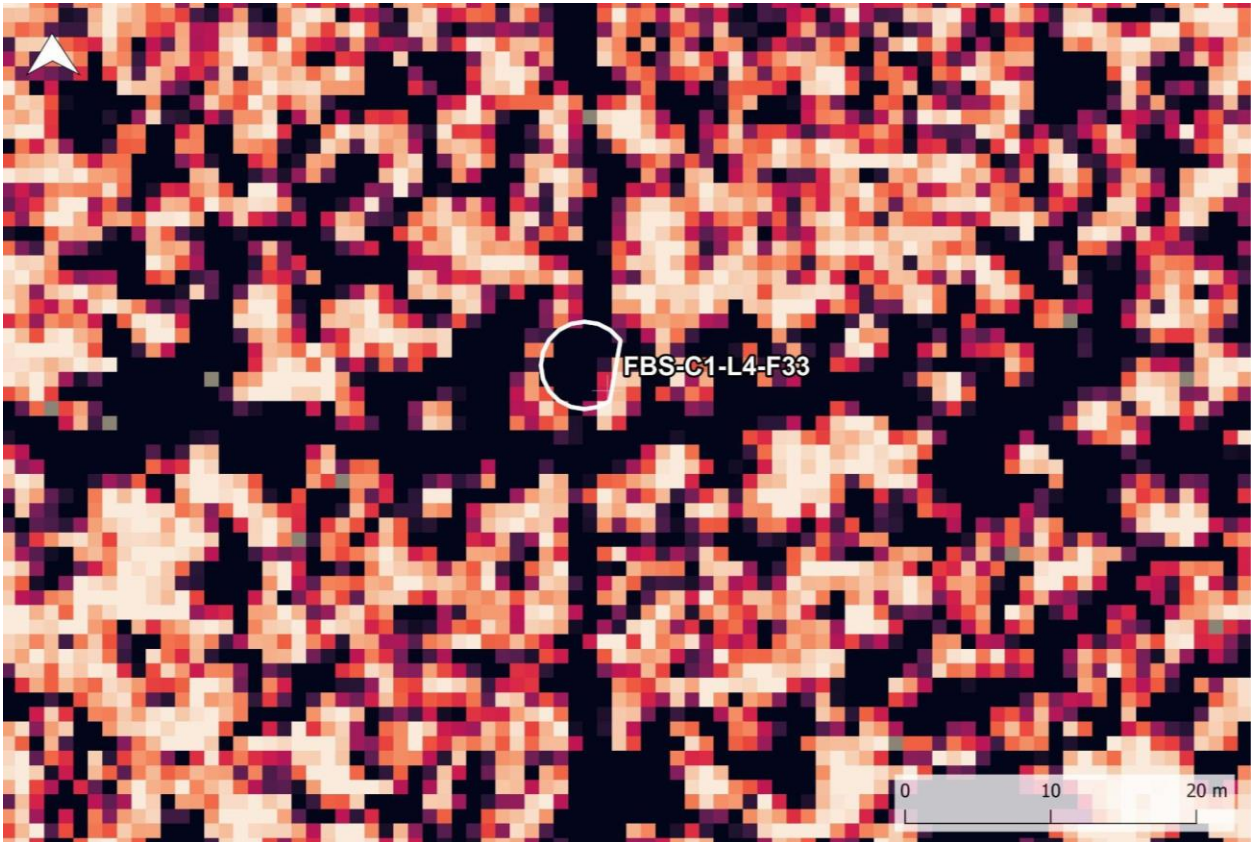
Field photo 3:



CHM Lidar:



CCE Lidar:



**360site: FBS-C1-L4-F32**

Line segment GlobalID: {ABE62927-1474-4426-BAAF-6E31E1D80303}

Category: **Treatment**

Site Type: **Upland Dry**

Feature Type: **Low Impact Seismic**

Line Length/Width/Direction: **8.72m/4.06m/Southeast**

Wildlife Trail or Human Access: **Wildlife Trail**

Vegetation (field): **blueberry, Labrador tea, black spruce, jack pine, bog cranberry, salix**

Dominant Species (field): **Blueberry**

Canopy Cover (field): **<25%**

Canopy Cover Estimate (CCE - Lidar) on 360site/on the line: **1.76% / 13.04%**

Canopy Cover Estimate 500 (cce500 - Lidar) on 360site/on the line: **0.90% / 12.86%**

**Field photo 1:**



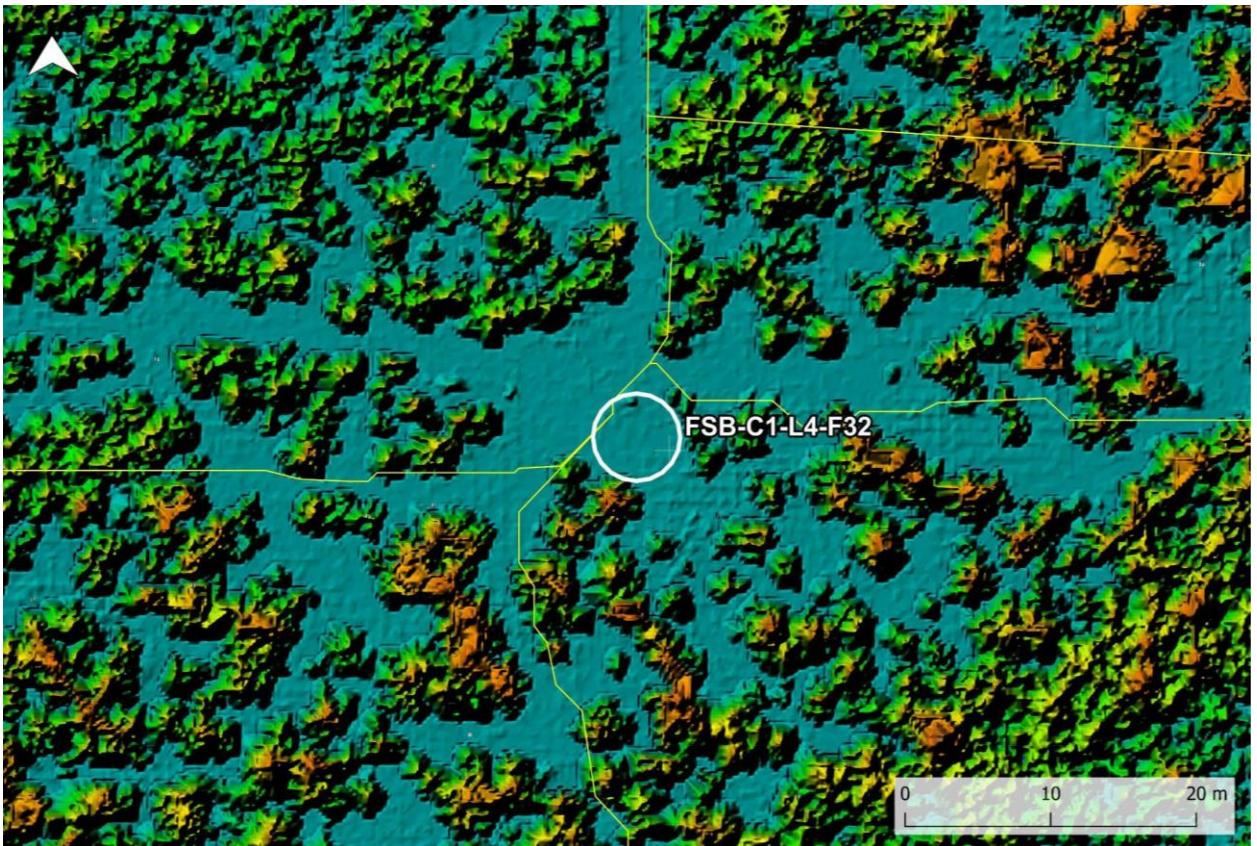
Field photo 2:



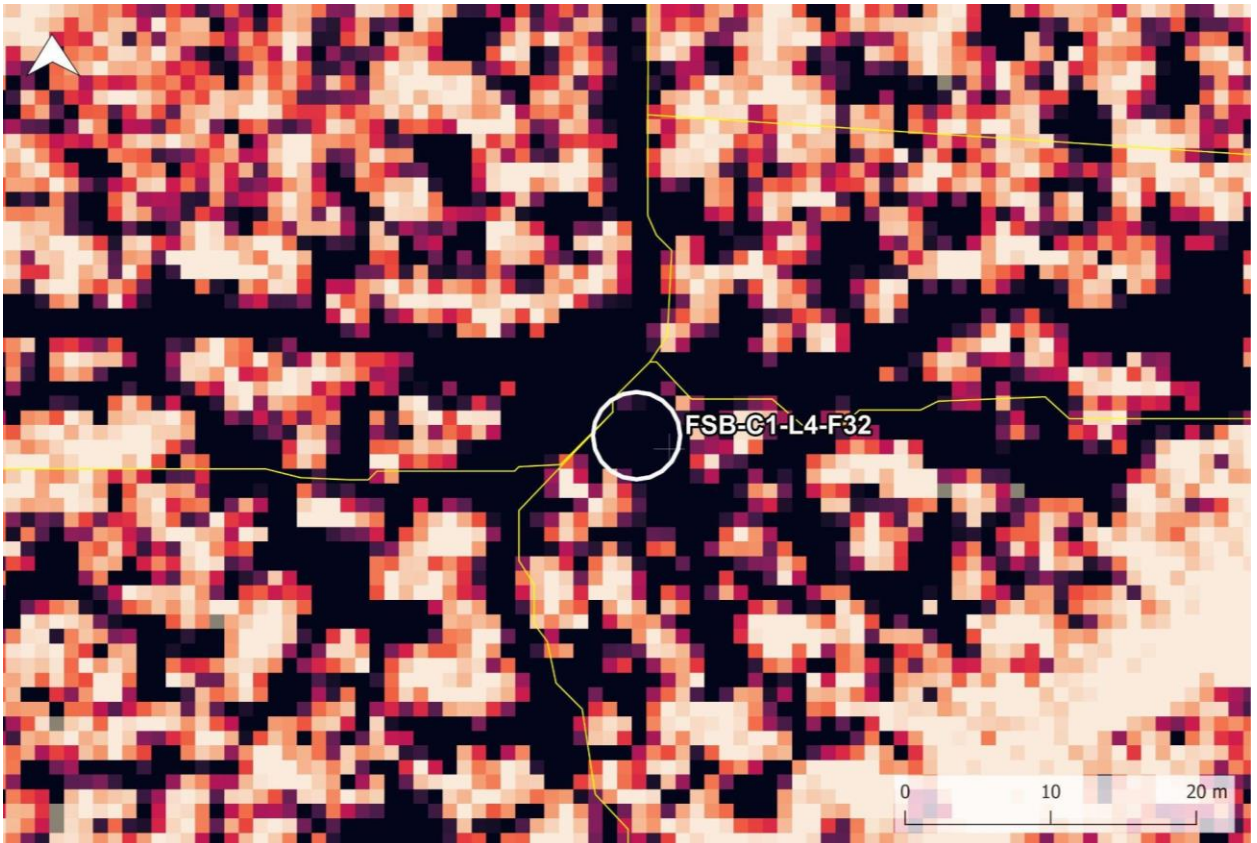
Field photo 3:



CHM Lidar:



CCE Lidar:



360site: **FBS-C2-L3-F10**

Line segment GlobalID: {AF696807-9BBE-48CD-8DE5-CDD24CE5DD51}

Category: **Treatment**

Site Type: **Lowland Treed**

Feature Type: **Low Impact Seismic**

Line Length/Width/Direction: **91.86m/4.44m/west**

Wildlife Trail or Human Access: **Human Access Tracks**

Vegetation (field): **Dwarf birch, Labrador tea, black spruce, tamarack, small bog cranberry, bog cranberry, blueberry, bog rosemary, rose**

Dominant Species (field): **Dwarf birch**

Canopy Cover (field): **<25%**

Canopy Cover Estimate (CCE - Lidar) on 360site/on the line: **14.88% / 1.63%**

Canopy Cover Estimate 500 (cce500 - Lidar) on 360site/on the line: **12.64% / 1.61%**

**Field photo 1:**



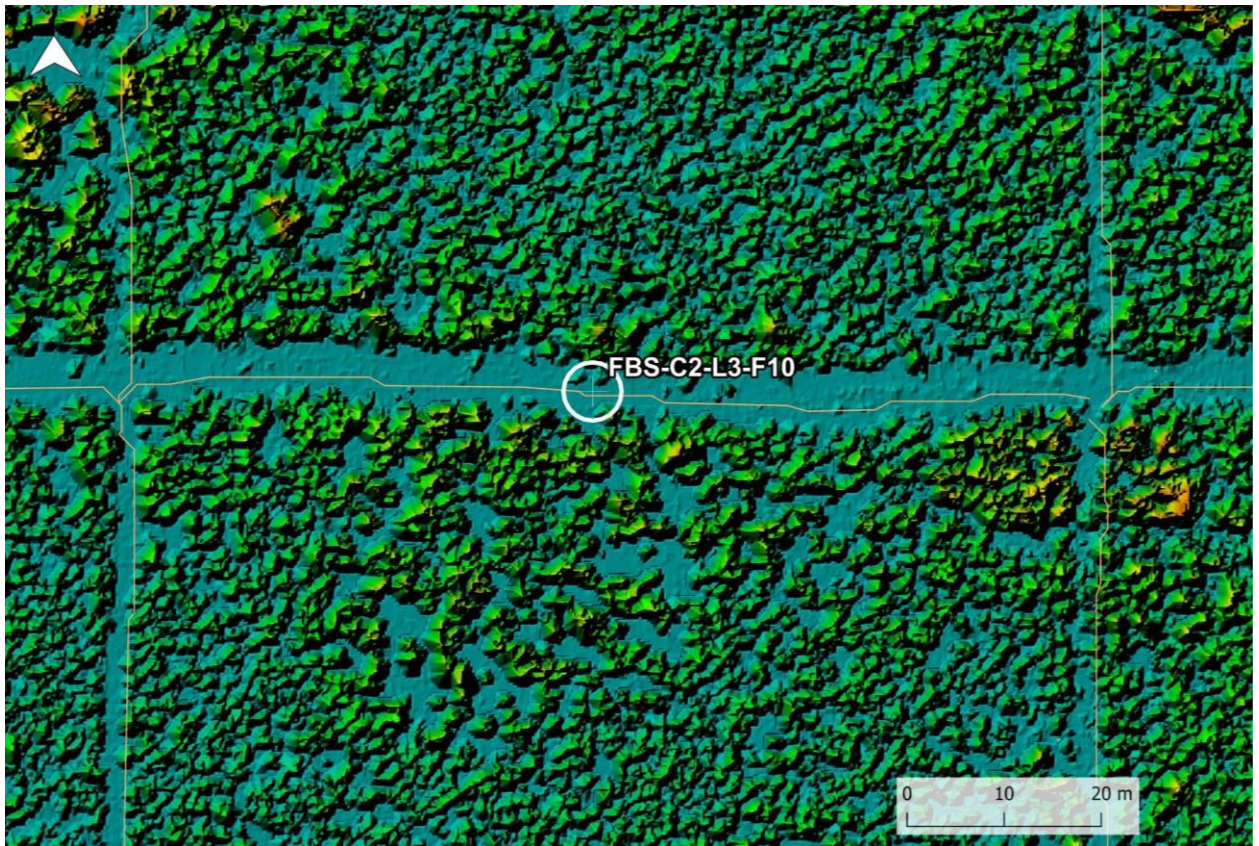
Field photo 2:



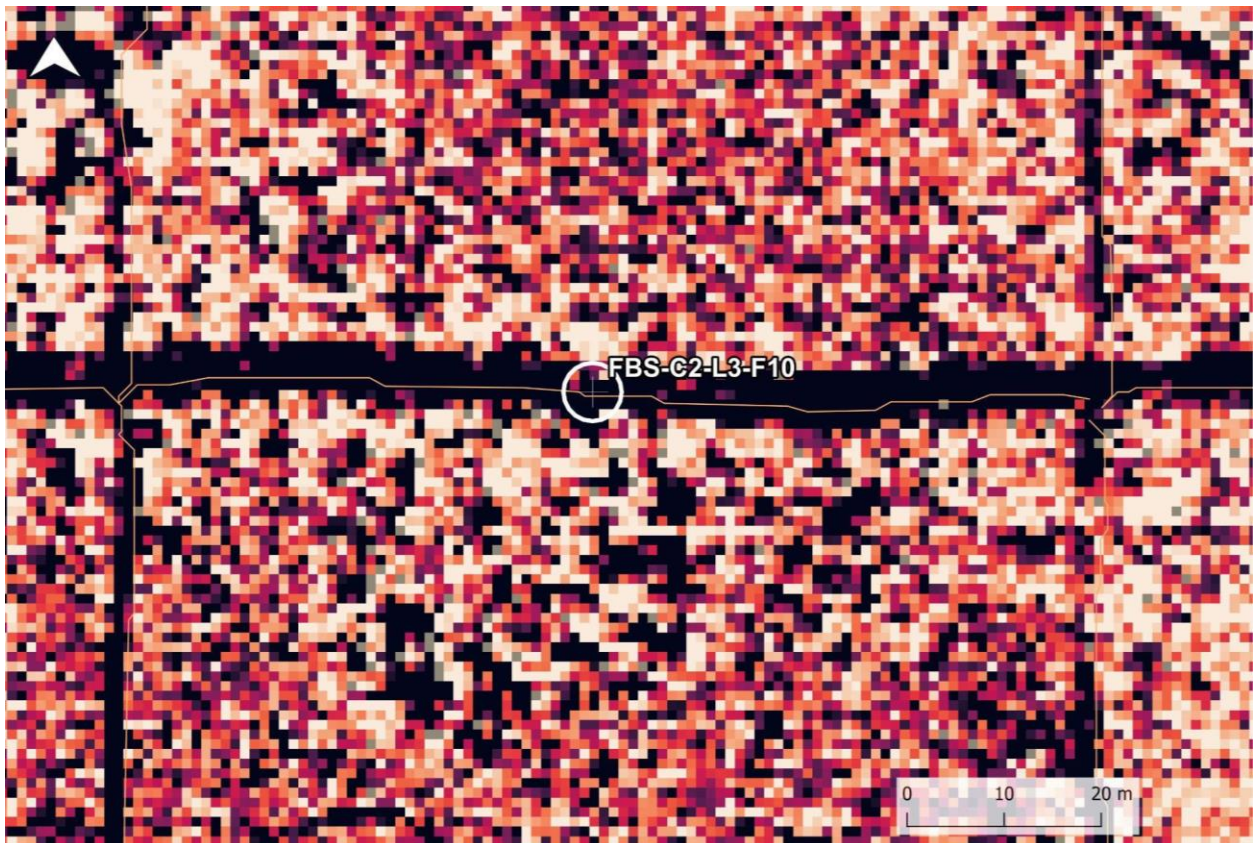
Field photo 3:



CHM Lidar:



CCE Lidar:



**360site: FBS-C2-L3-F11**

Line segment GlobalID: {7EBC7365-0AEC-4C7C-9408-6F91CC2540D9}

Category: **Treatment**

Site Type: **Upland Dry**

Feature Type: **Low Impact Seismic**

Line Length/Width/Direction: **73.87m/4.21m/west**

Wildlife Trail or Human Access: **Human Access Tracks**

Vegetation (field): **Tamarack, black spruce, dwarf birch, salix, bog cranberry, Labrador tea, blueberry, small bog cranberry**

Dominant Species (field): **Dwarf birch**

Canopy Cover (field): **<25%**

Canopy Cover Estimate (CCE - Lidar) on 360site/on the line: **13.24% / 4.07%**

Canopy Cover Estimate 500 (cce500 - Lidar) on 360site/on the line: **10.02% / 3.61%**

**Field photo 1:**



Field photo 2:



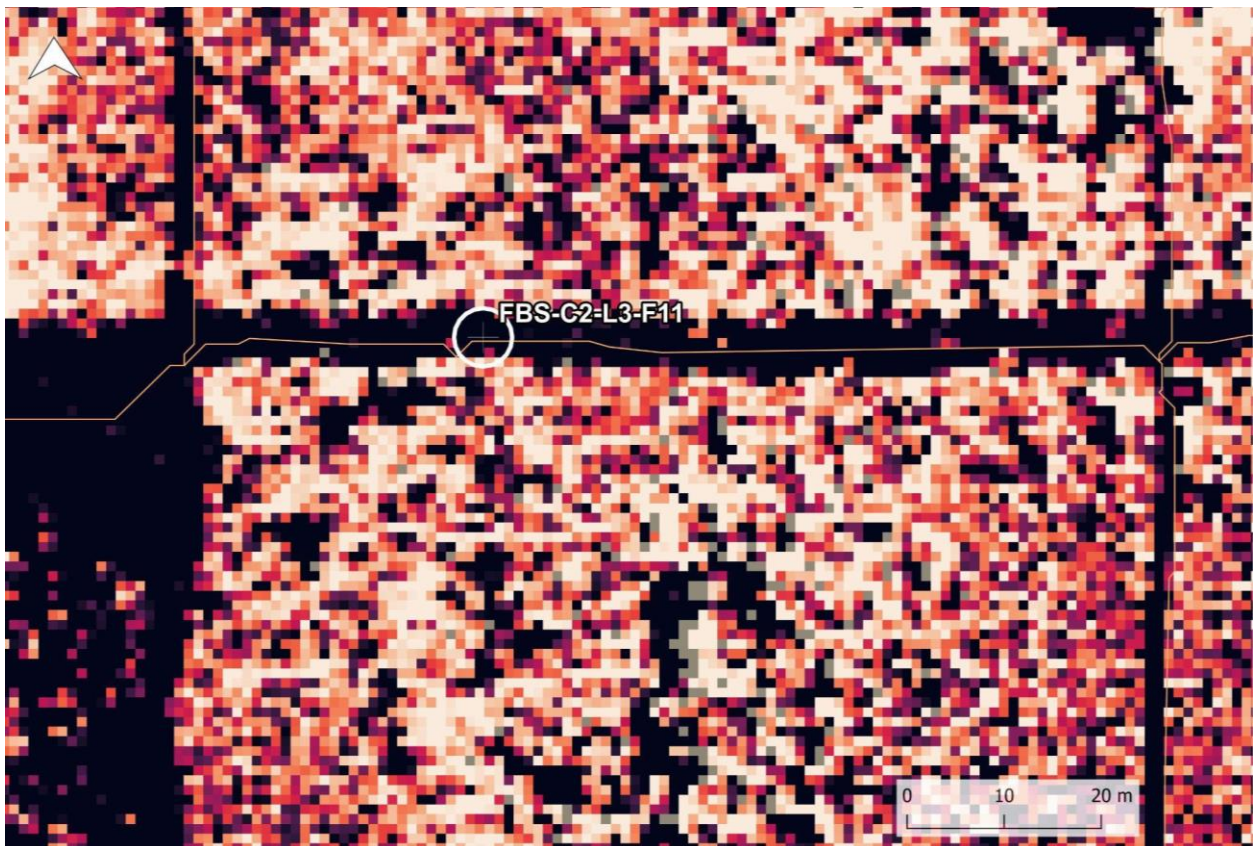
Field photo 3:



CHM Lidar:



CCE Lidar:



**360site: FBS-C2-L3-F12**

Line segment GlobalID: {77FA0C96-B95D-4525-8CAE-B77ED3594912}

Category: **Treatment**

Site Type: **Upland Dry**

Feature Type: **Low Impact Seismic**

Line Length/Width/Direction: **96.10m/4.86m/west**

Wildlife Trail or Human Access: **Human Access Tracks**

Vegetation (field): **Bog rosemary, tamarack, black spruce, Labrador tea, blueberry, bog cranberry, palmate leaved coltsfoot, bunchberry, salix**

Dominant Species (field): **Labrador tea**

Canopy Cover (field): **<25%**

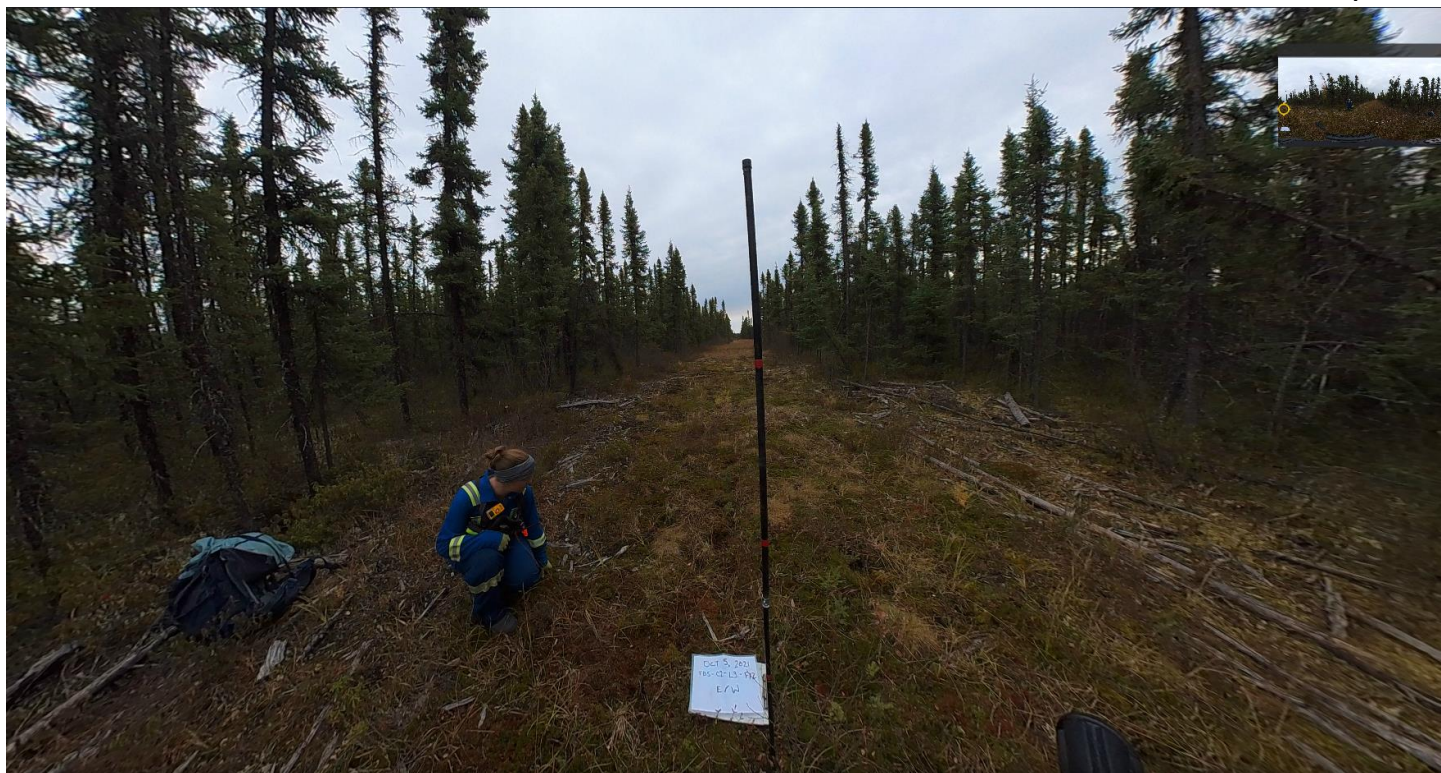
Canopy Cover Estimate (CCE - Lidar) on 360site/on the line: **13.24% / 4.07%**

Canopy Cover Estimate 500 (cce500 - Lidar) on 360site/on the line: **10.02% / 3.61%**

**Field photo 1:**



Field photo 2:



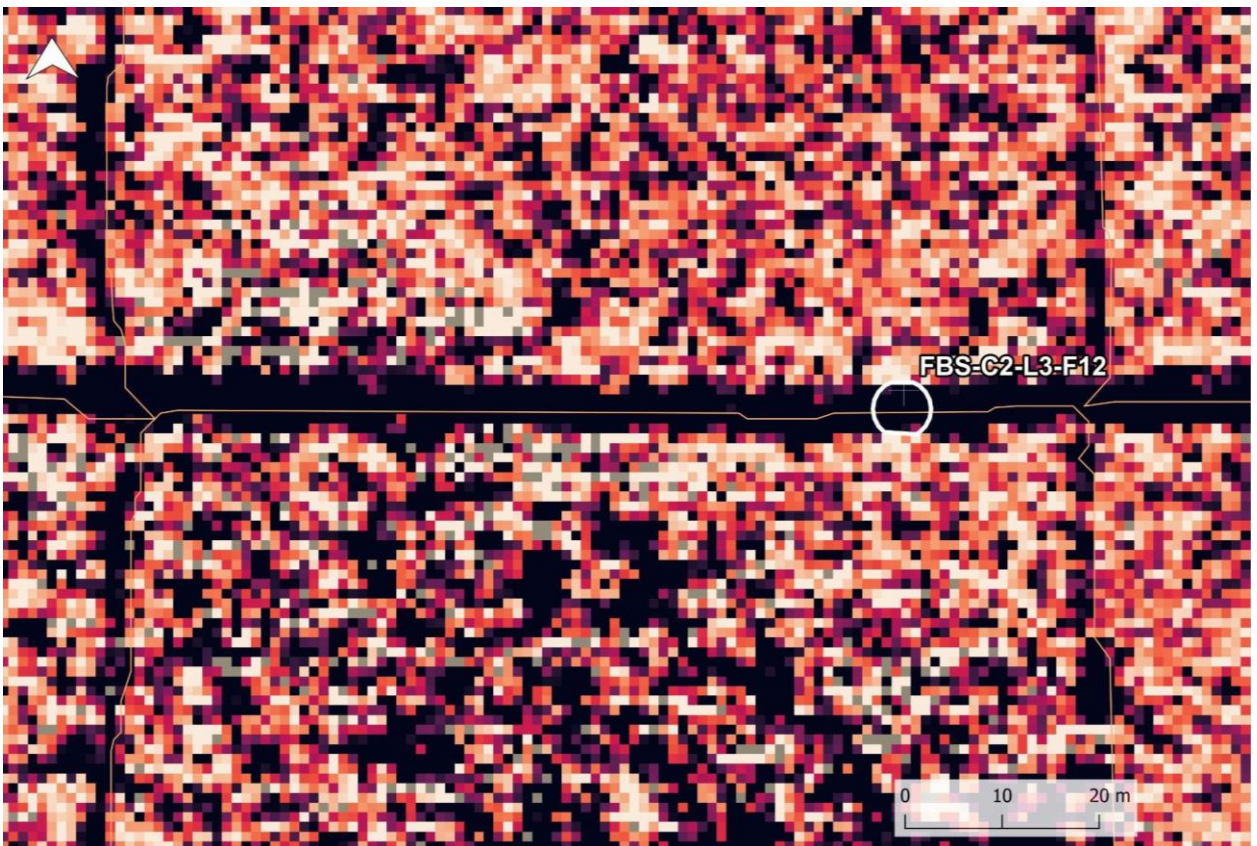
Field photo 3:



CHM Lidar:



CCE Lidar:



**360site: FBS-C2-L2-F7**

Line segment GlobalID: {403AB67C-7ABD-46B7-8C71-33CADA4DE539}

Category: **Treatment**

Site Type: **Lowland Treed**

Feature Type: **Low Impact Seismic**

Line Length/Width/Direction: **54.42m/3.75m/west**

Wildlife Trail or Human Access: **Human Access Tracks**

Vegetation (field): **Salix, tamarack, black spruce, Labrador tea, leather leaf, alder, bog cranberry, dwarf birch**

Dominant Species (field): **Alder**

Canopy Cover (field): **25-70%**

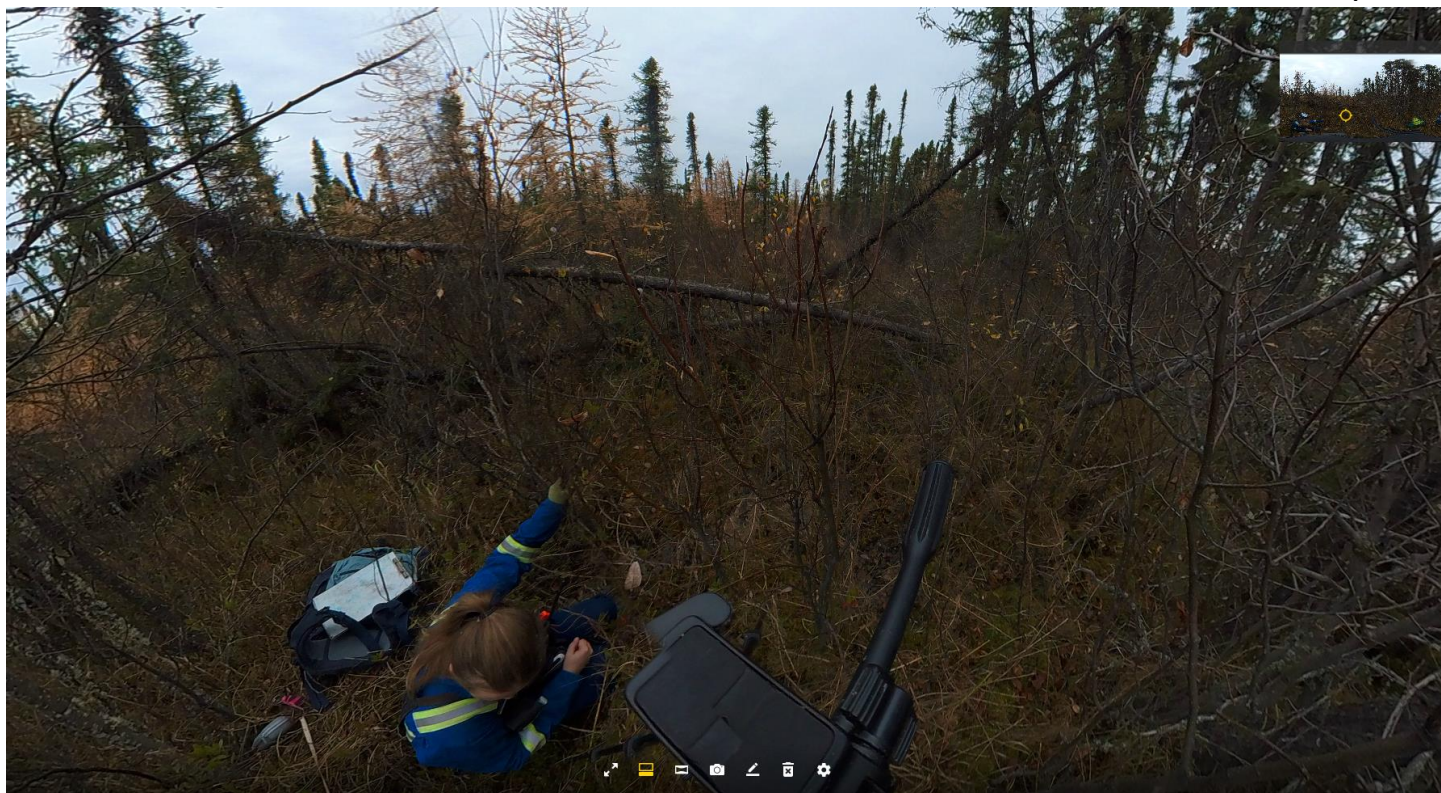
Canopy Cover Estimate (CCE - Lidar) on 360site/on the line: **67.79% / 76.77%**

Canopy Cover Estimate 500 (cce500 - Lidar) on 360site/on the line: **67.96% / 67.56%**

**Field photo 1:**



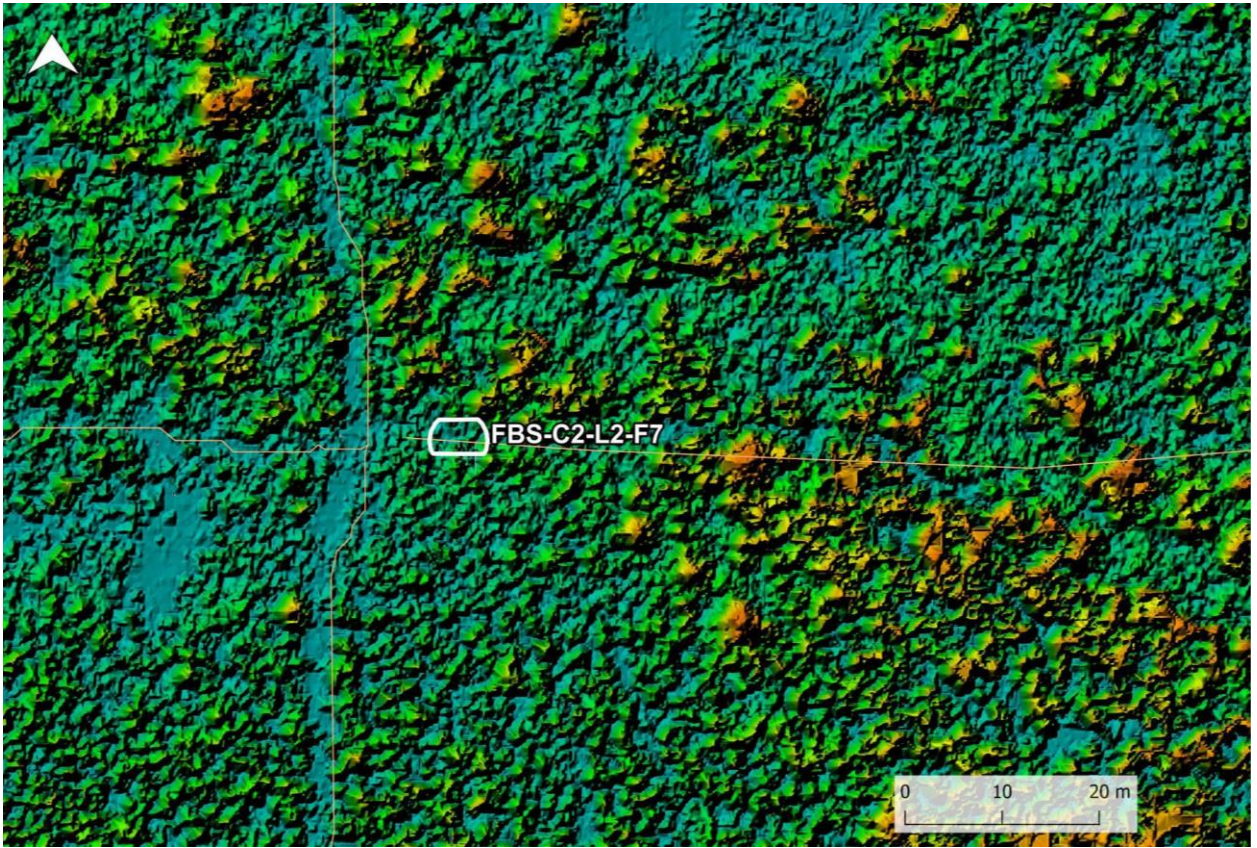
Field photo 2:



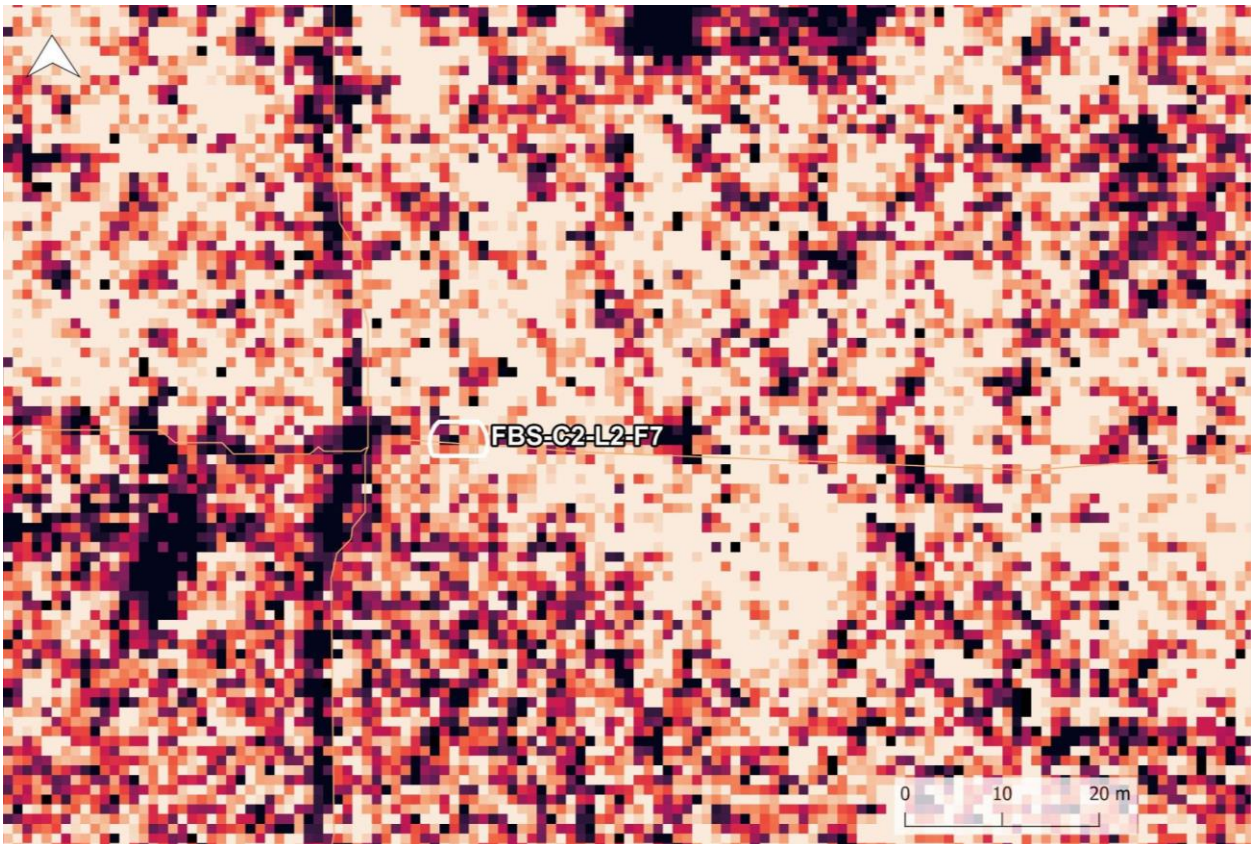
Field photo 3:



CHM Lidar:



CCE Lidar:



**360site: FBS-C2-L2-F6**

Line segment GlobalID: {403AB67C-7ABD-46B7-8C71-33CADA4DE539}

Category: **Treatment**

Site Type: **Lowland Treed**

Feature Type: **Low Impact Seismic**

Line Length/Width/Direction: **105.20m/3.75m/east**

Wildlife Trail or Human Access: **Human Access Tracks**

Vegetation (field): **Dwarf birch, Labrador tea, leather leaf, salix, bog cranberry, black spruce, tamarack**

Dominant Species (field): **Dwarf birch/Salix**

Canopy Cover (field): **25-70%**

Canopy Cover Estimate (CCE - Lidar) on 360site/on the line: **49.47% / 28.26%**

Canopy Cover Estimate 500 (cce500 - Lidar) on 360site/on the line: **49.33% / 27.77%**

**Field photo 1:**



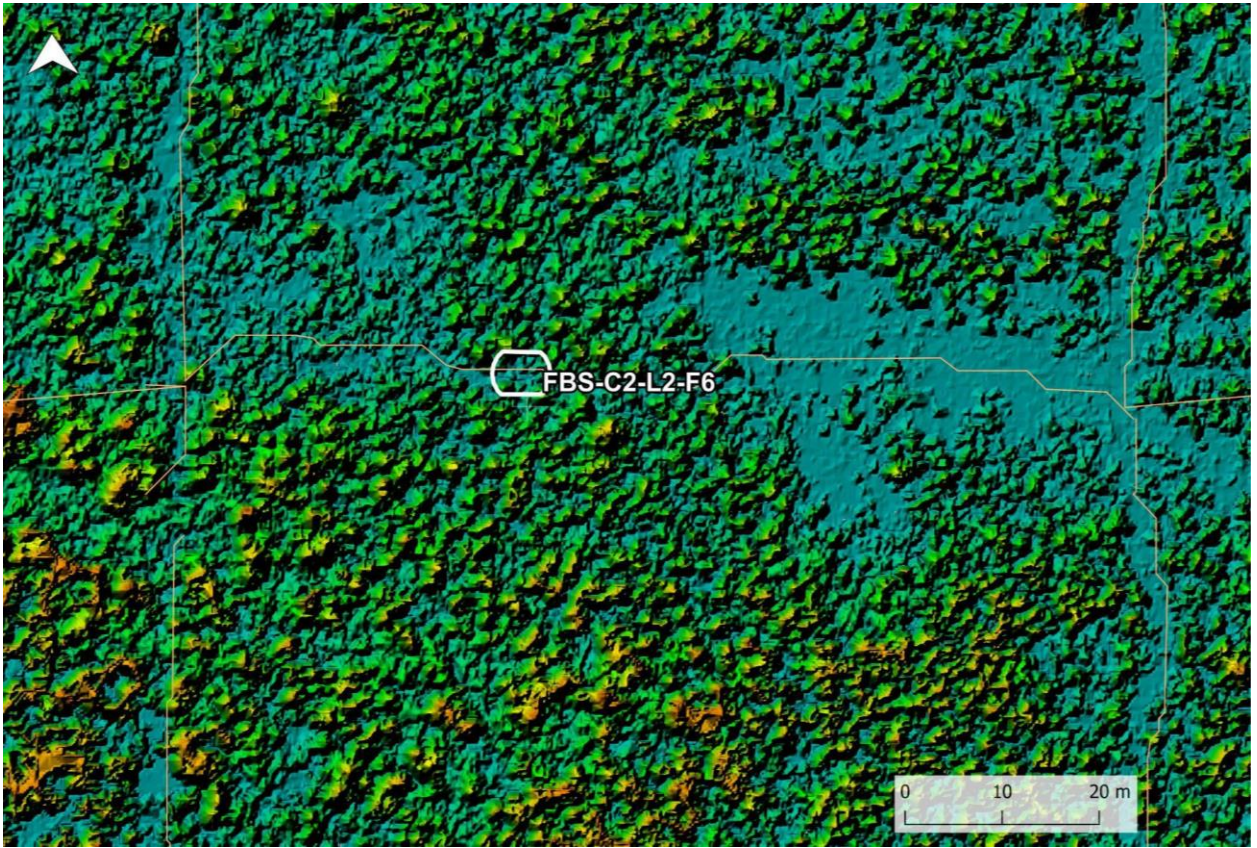
Field photo 2:



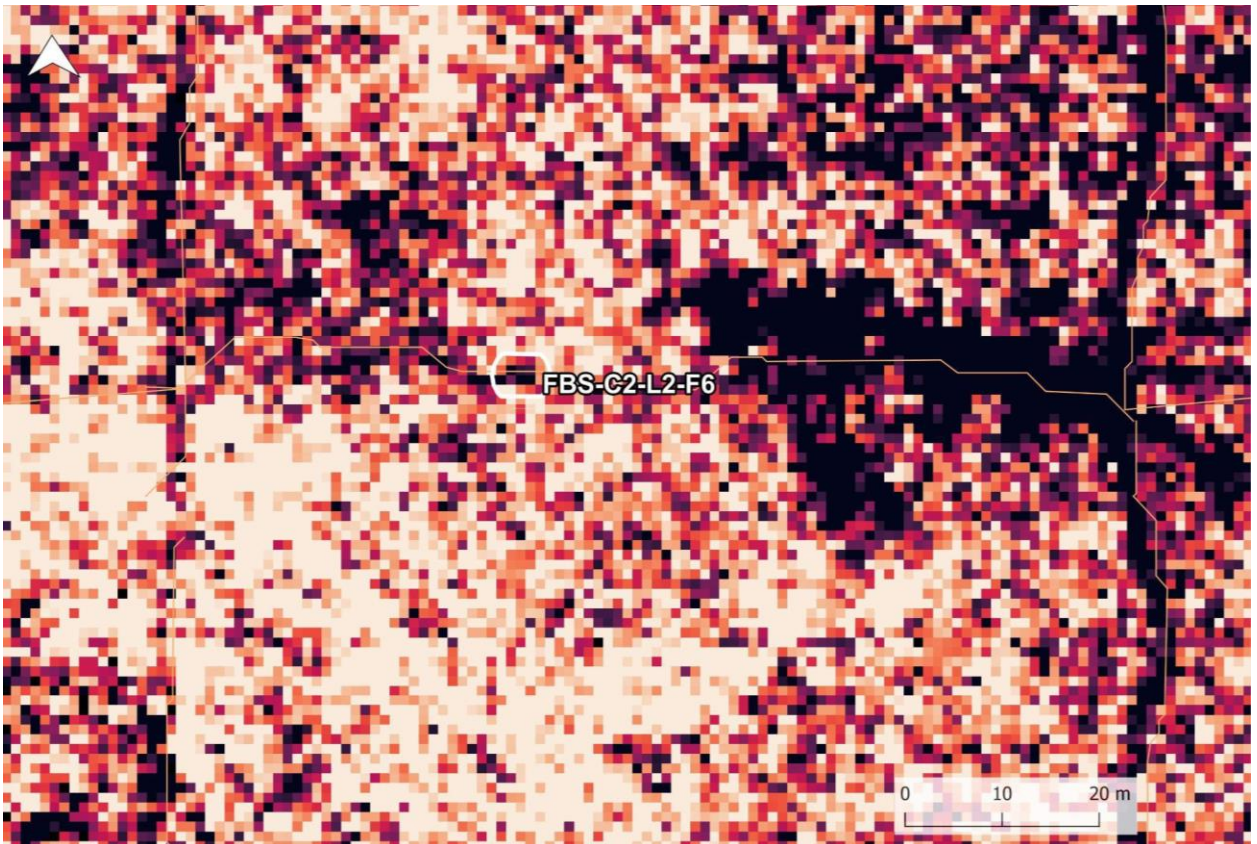
Field photo 3:



CHM Lidar:



CCE Lidar:



**360site: FBS-C2-L2-F5**

Line segment GlobalID: {337938C4-3B48-42CE-8CE5-F3366178686A}

Category: **Treatment**

Site Type: **Lowland Treed**

Feature Type: **Low Impact Seismic**

Line Length/Width/Direction: **102.91m/3.75m/east**

Wildlife Trail or Human Access: **Human Access Tracks**

Vegetation (field): **Tamarack, black spruce, salix, Labrador tea, leather leaf, small bog cranberry, big bog cranberry, dwarf birch, bog rosemary**

Dominant Species (field): **Dwarf birch**

Canopy Cover (field): **25-70%**

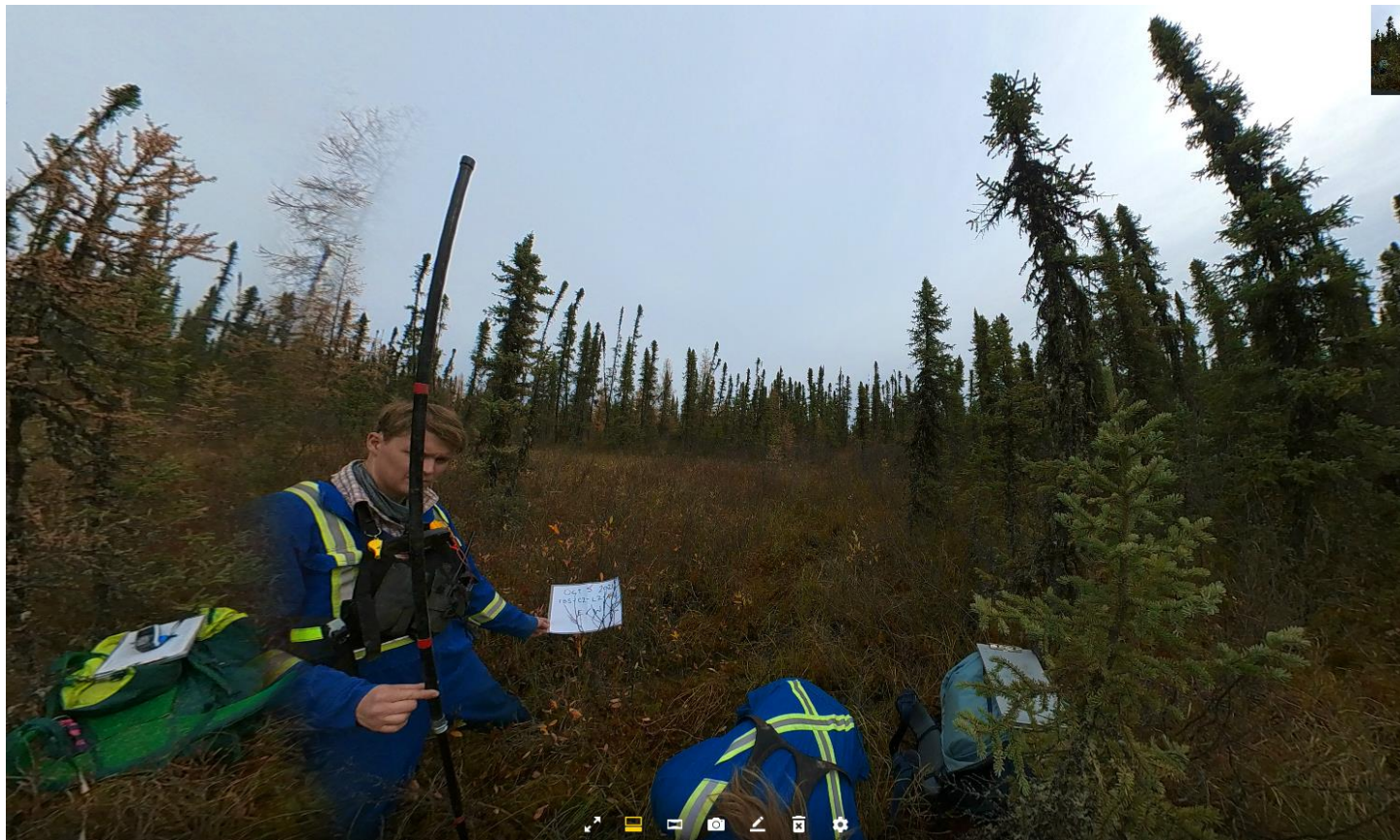
Canopy Cover Estimate (CCE - Lidar) on 360site/on the line: **6.21% / 36.80%**

Canopy Cover Estimate 500 (cce500 - Lidar) on 360site/on the line: **6.21% / 34.15%**

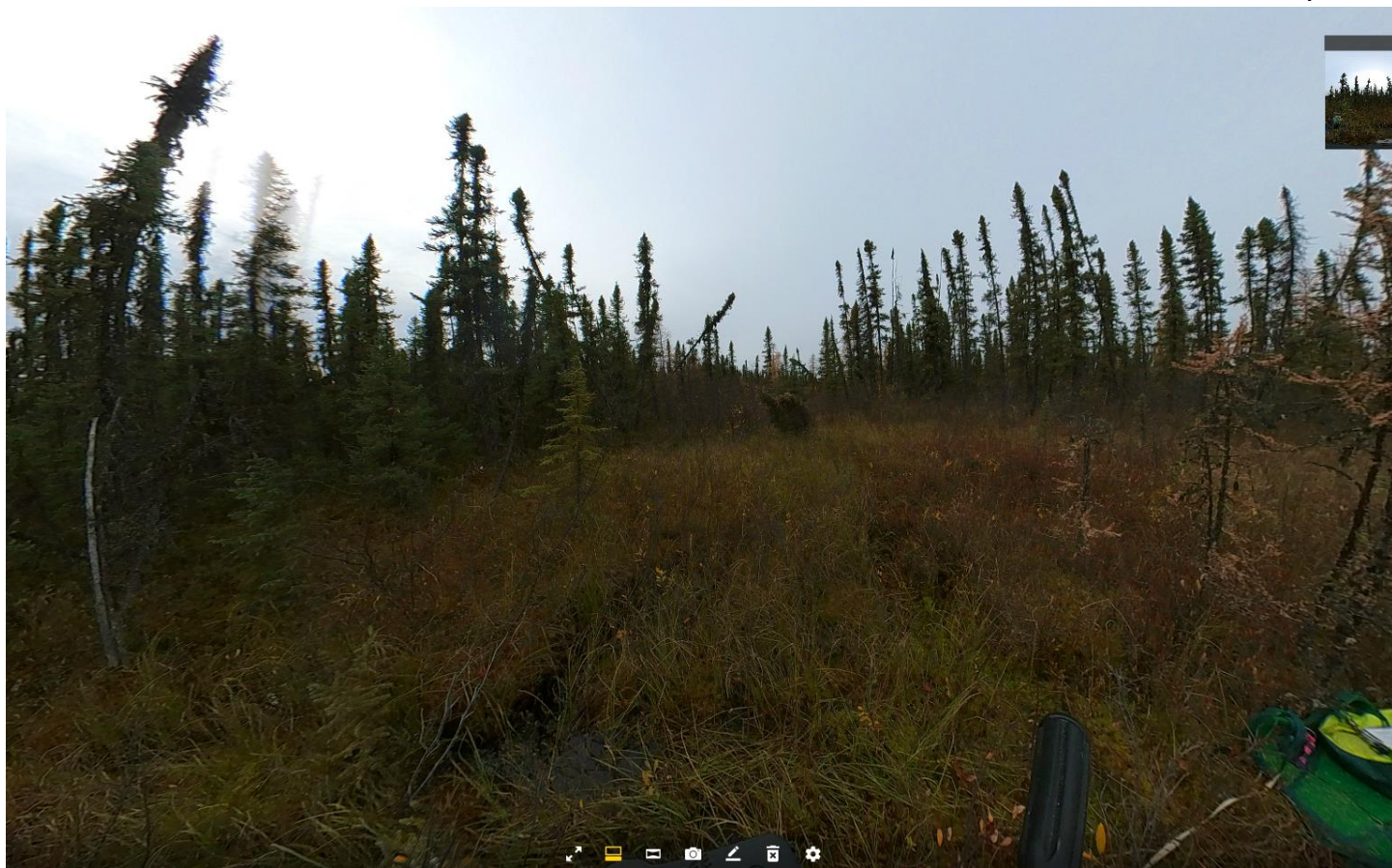
**Field photo 1:**



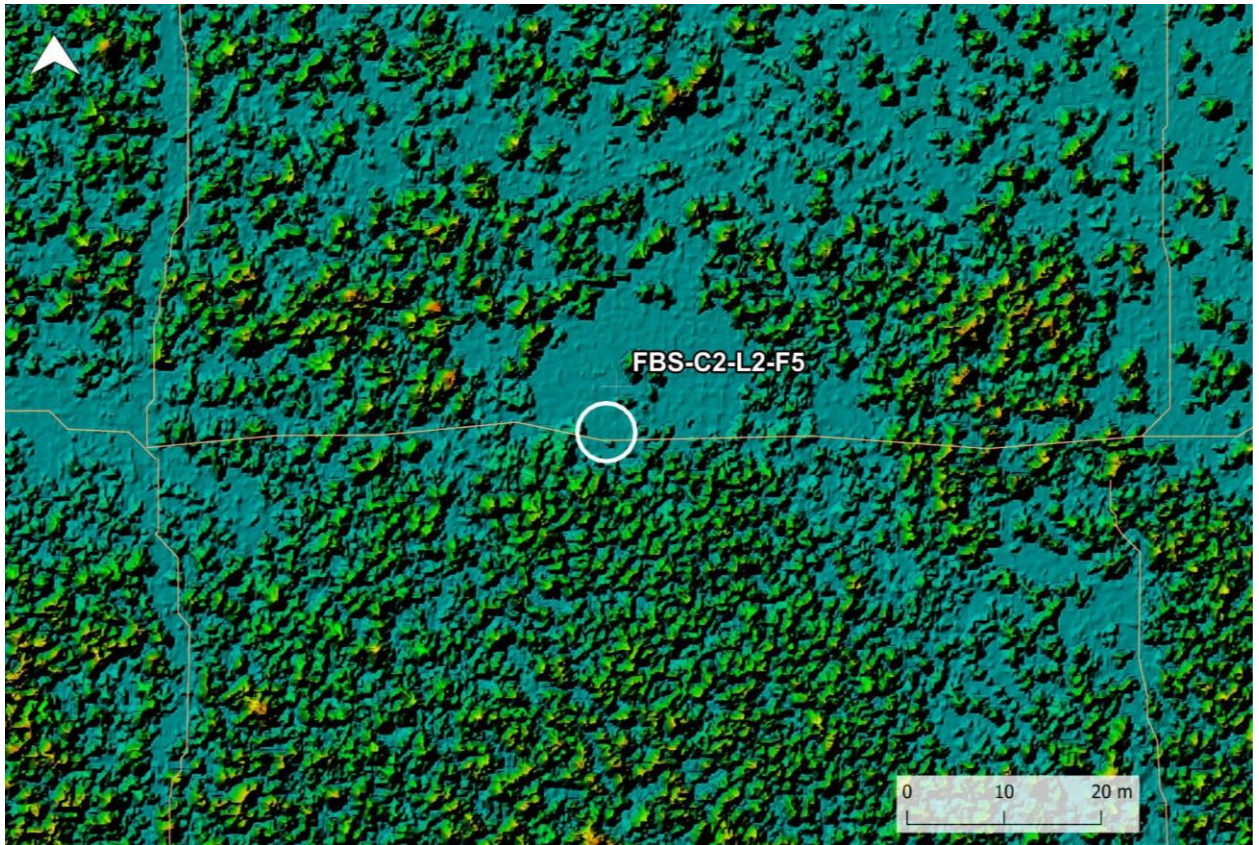
Field photo 2:



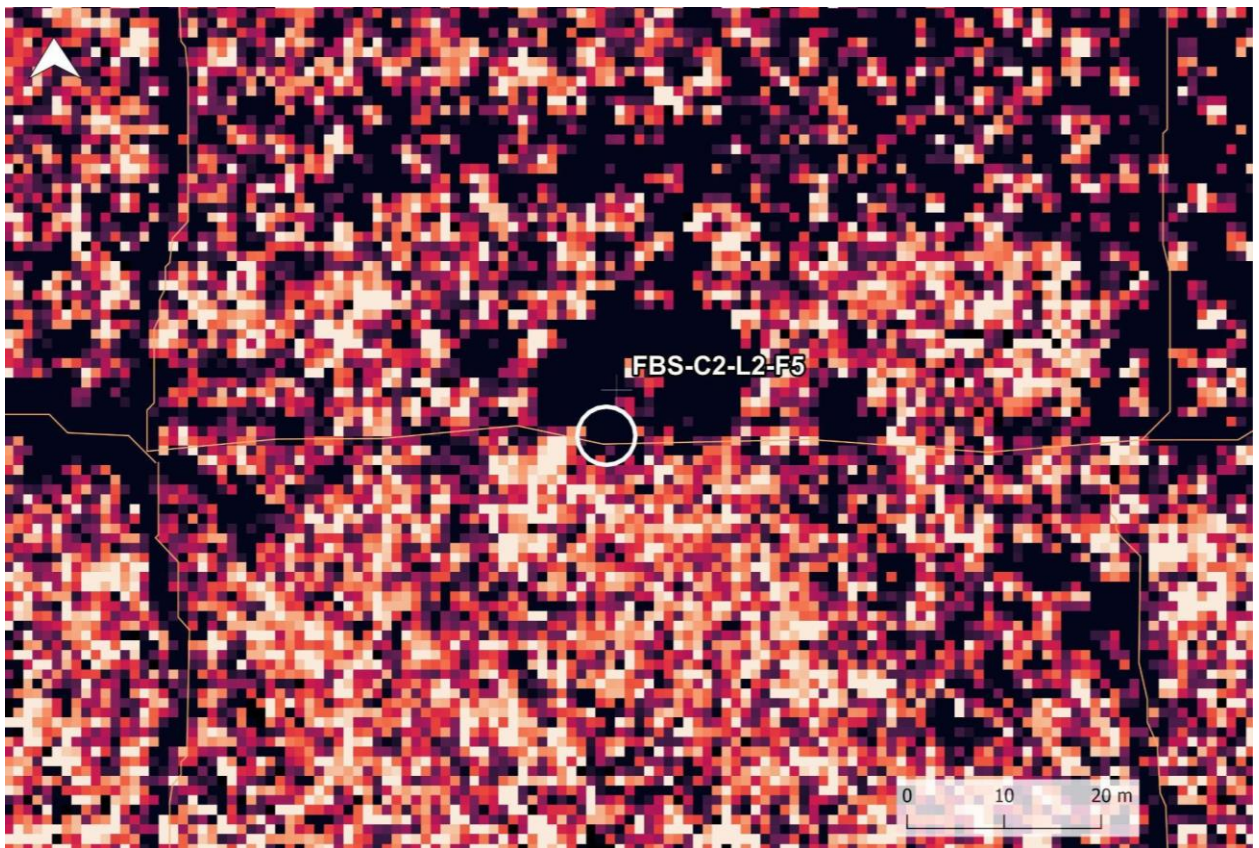
Field photo 3:



CHM Lidar:



CCE Lidar:



**360site: FBS-C1-L1-F1**

Line segment GlobalID: {7EB6448B-B0A8-4D8F-B323-22F47FD837D6}

Category: **Treatment**

Site Type: **Lowland Treed**

Feature Type: **Low Impact Seismic**

Line Length/Width/Direction: **71.39m/3.14m/south**

Wildlife Trail or Human Access: **Human Access Tracks**

Vegetation (field): **Labrador tea, salix, black spruce, larch, bog cranberry, bog rosemary**

Dominant Species (field): **Salix**

Canopy Cover (field): **<25%**

Canopy Cover Estimate (CCE - Lidar) on 360site/on the line: **11.6% / 35.23%**

Canopy Cover Estimate 500 (cce500 - Lidar) on 360site/on the line: **11.6% / 33.56%**

**Field photo 1:**



Field photo 2:

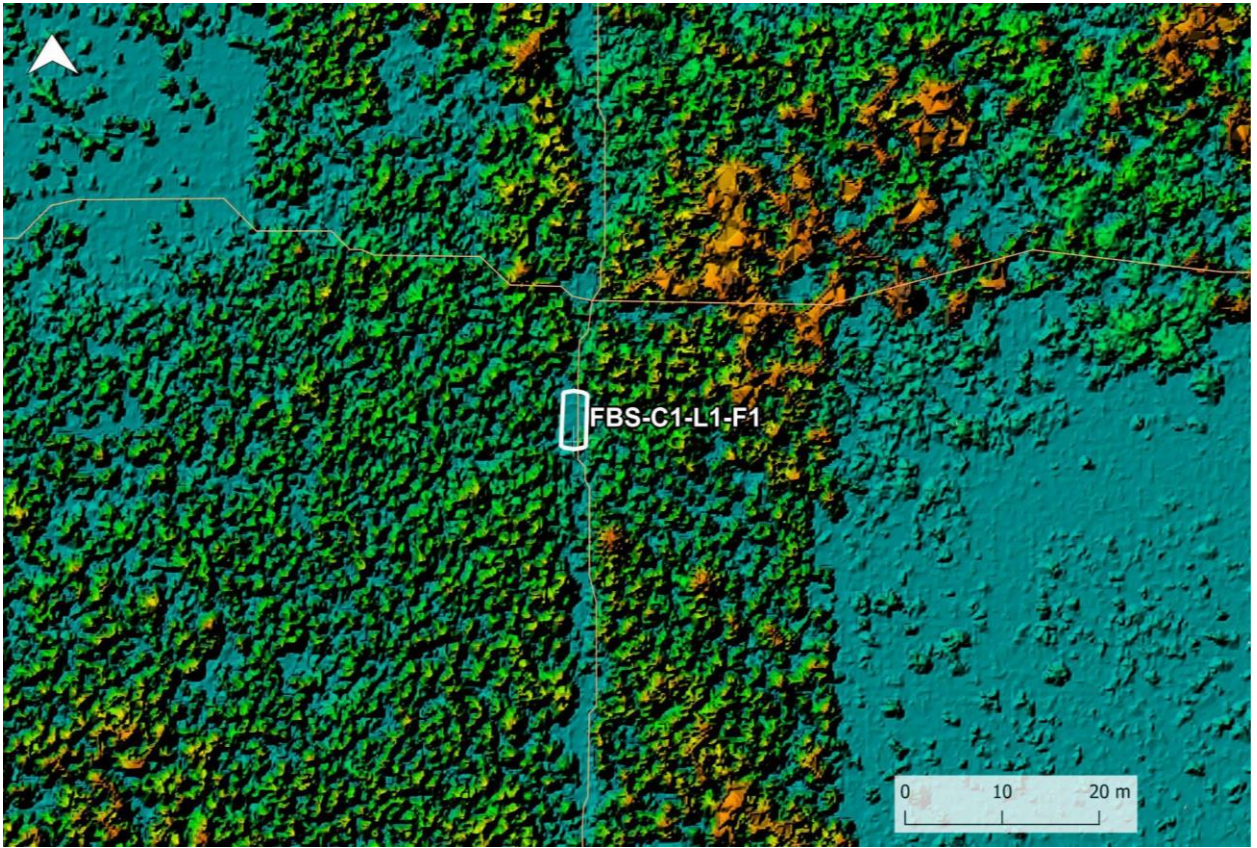


Field photo 3:

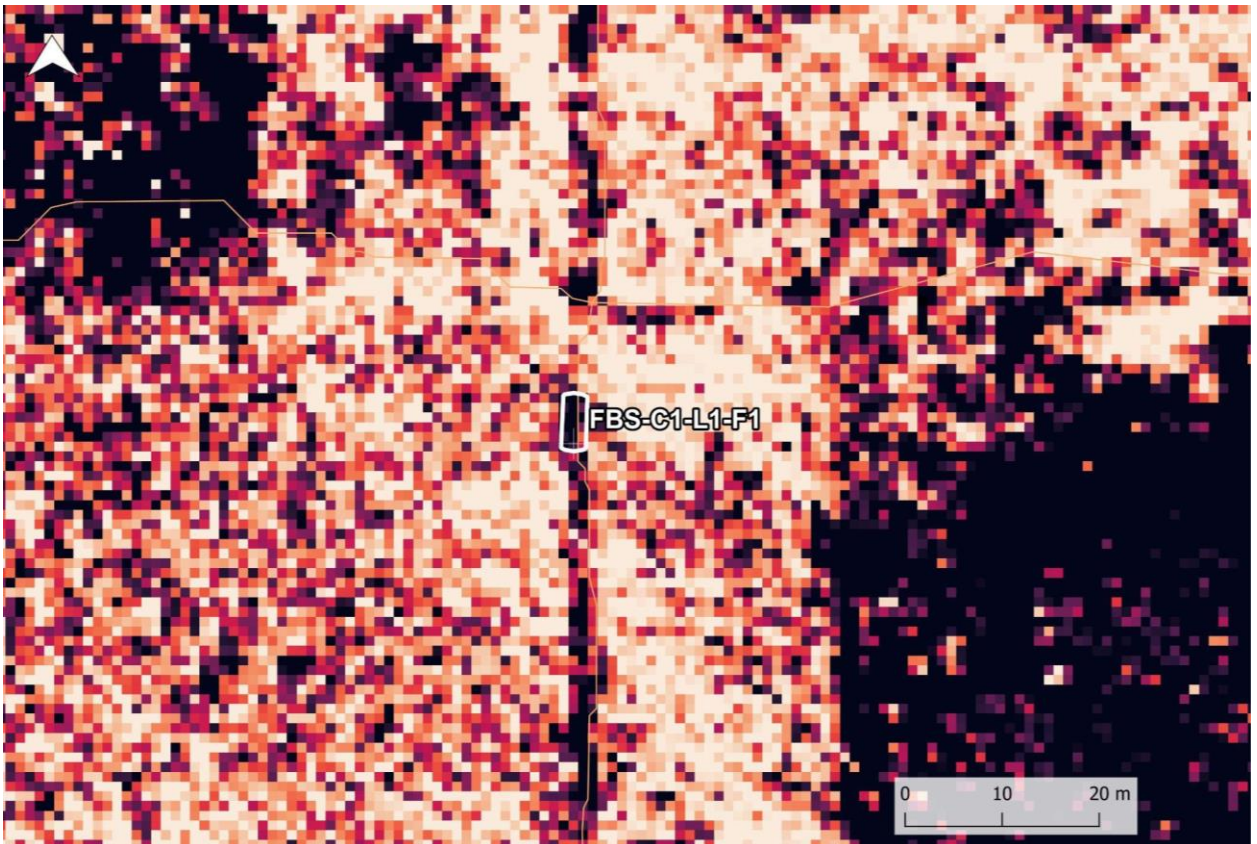


OCT 9 2021  
FBS-C1-L1-F3  
N/S

CHM Lidar:



CCE Lidar:



**360site: FBS-C1-L1-F2**

Line segment GlobalID: {E5A06C97-3B42-4090-BE5C-724335DCA4FA}

Category: **Treatment**

Site Type: **Upland Dry**

Feature Type: **Low Impact Seismic**

Line Length/Width/Direction: **27.72m/3.40m/south**

Wildlife Trail or Human Access: **None**

Vegetation (field): **Labrador tea, salix, juniper, bog rosemary, small bog cranberry, black spruce, larch, blueberry**

Dominant Species (field): **Labrador tea**

Canopy Cover (field): **<25%**

Canopy Cover Estimate (CCE - Lidar) on 360site/on the line: **2.98% / 19.15%**

Canopy Cover Estimate 500 (cce500 - Lidar) on 360site/on the line: **2.98% / 16.23%**

**Field photo 1:**



Field photo 2:



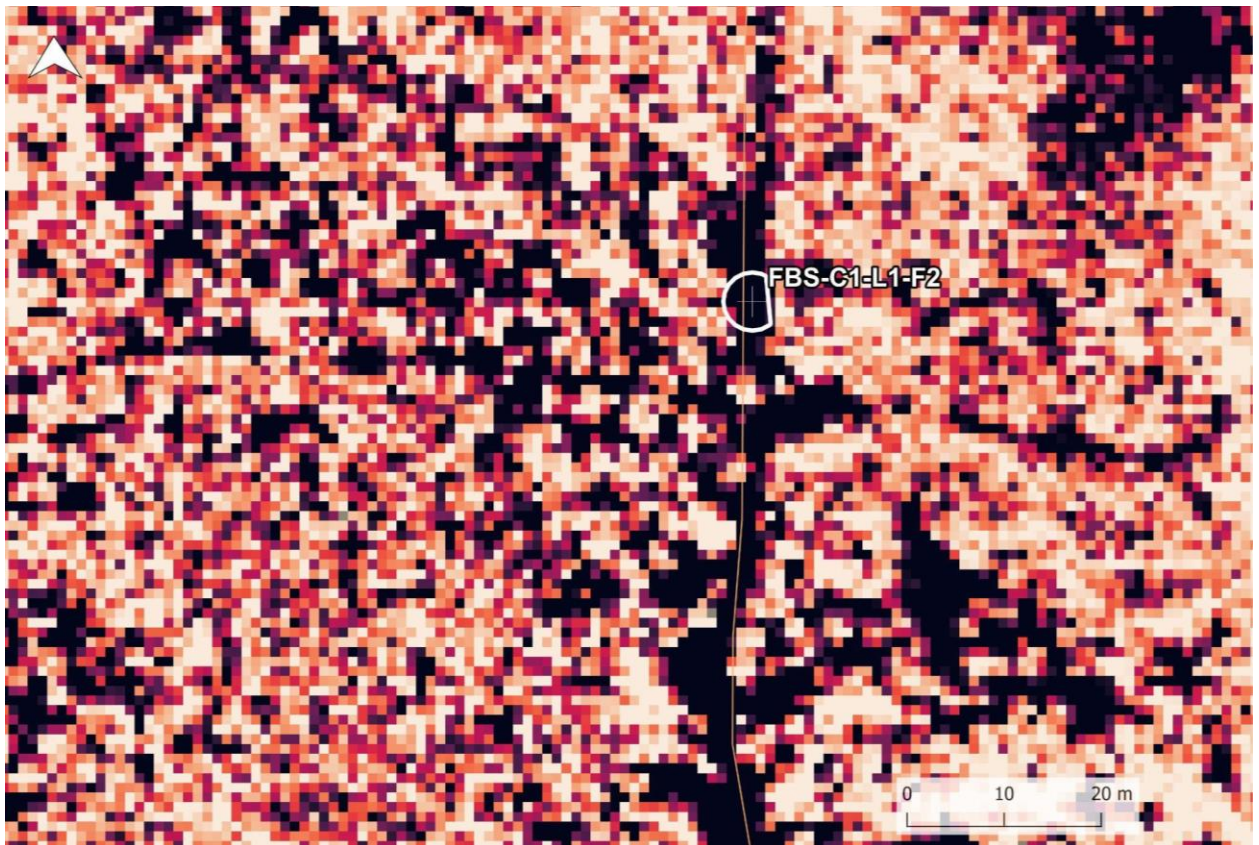
Field photo 3:



CHM Lidar:



CCE Lidar:



**360site: FBS-C1-L1-F8**

Line segment GlobalID: {9873FC01-7C3E-485F-8B5B-5CF712B43A62}

Category: **Treatment**

Site Type: **Upland Dry**

Feature Type: **Low Impact Seismic**

Line Length/Width/Direction: **80.28m/2.75m/south**

Wildlife Trail or Human Access: **None**

Vegetation (field): **black spruce, salix, Labrador tea, bog cranberry, larch**

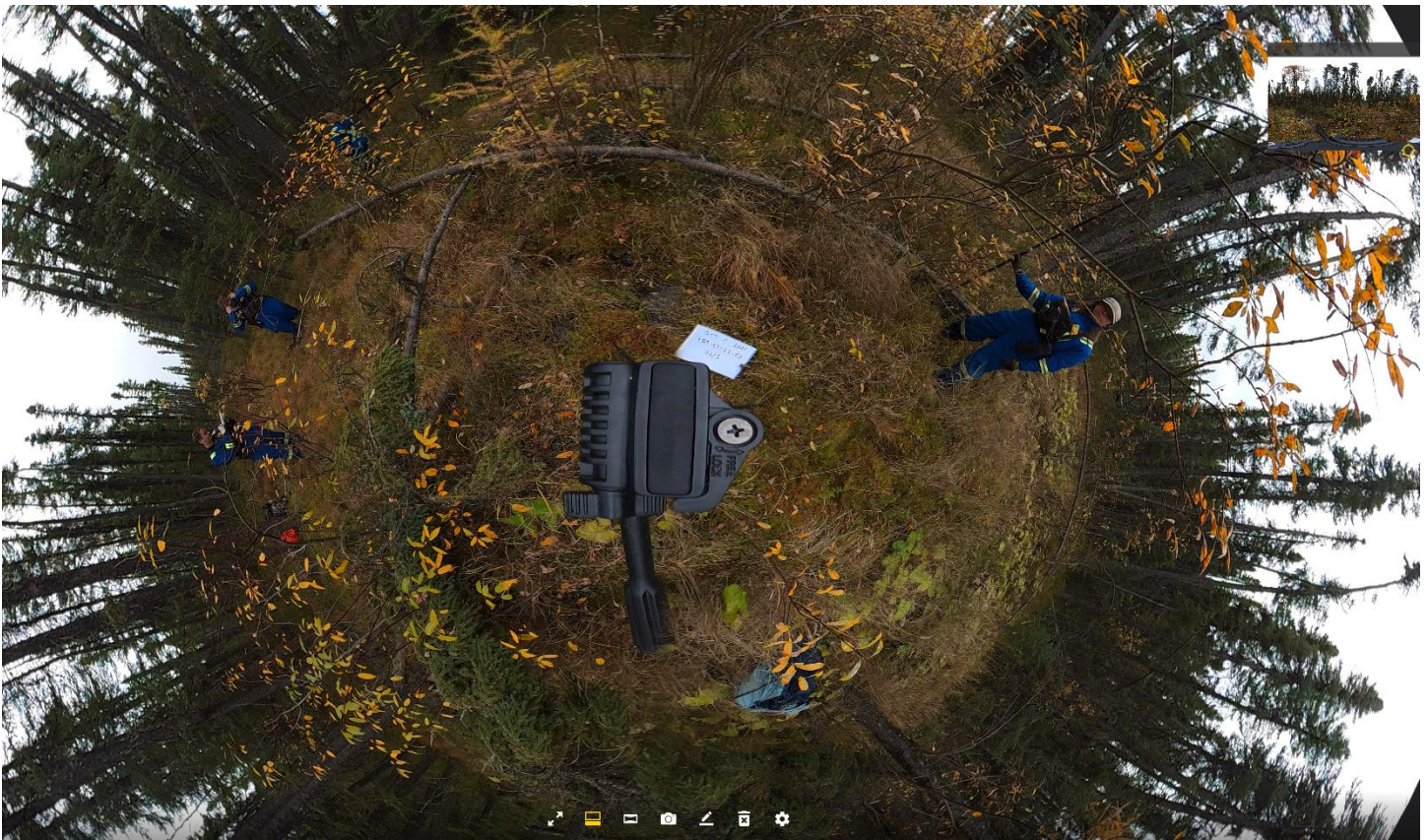
Dominant Species (field): **Salix**

Canopy Cover (field): **<25%**

Canopy Cover Estimate (CCE - Lidar) on 360site/on the line: **23.9% / 37.06%**

Canopy Cover Estimate 500 (cce500 - Lidar) on 360site/on the line: **18.79% / 22.09%**

**Field photo 1:**



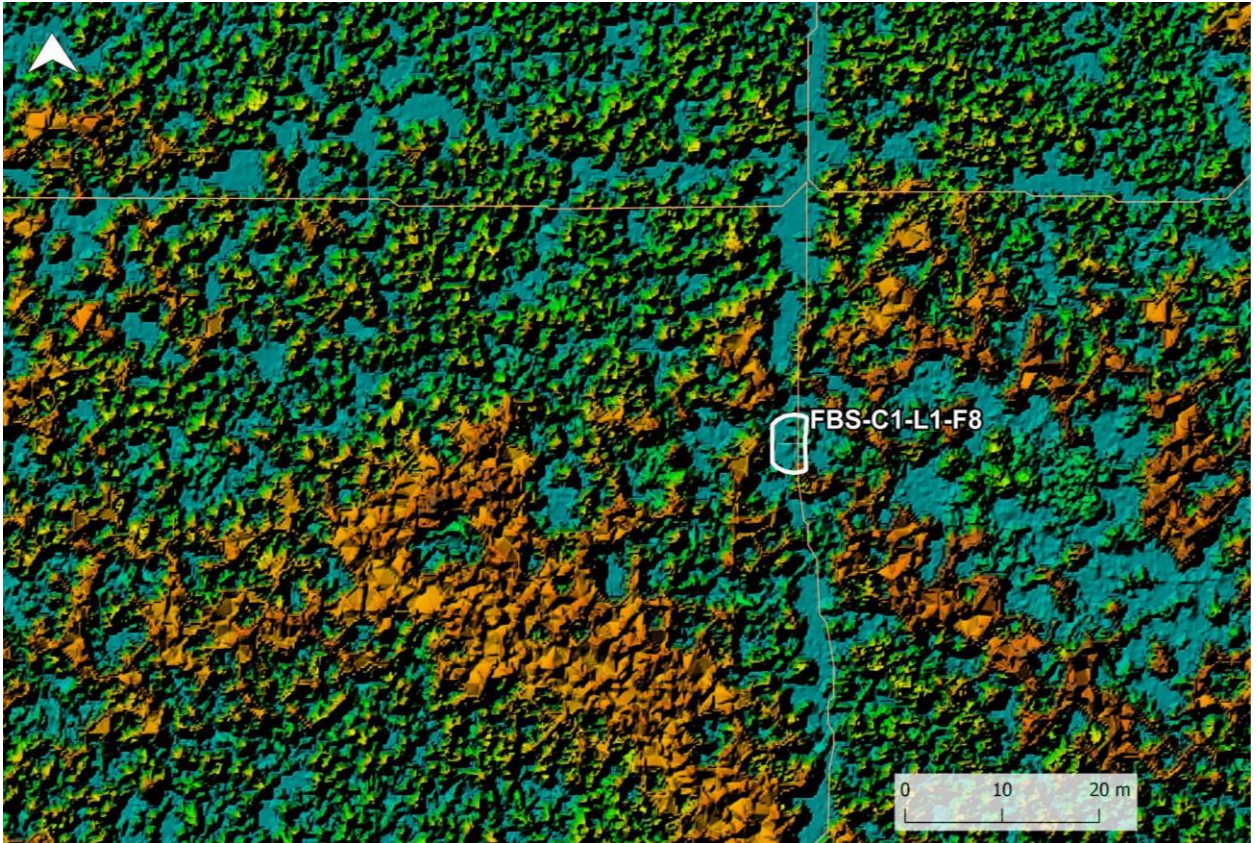
Field photo 2:



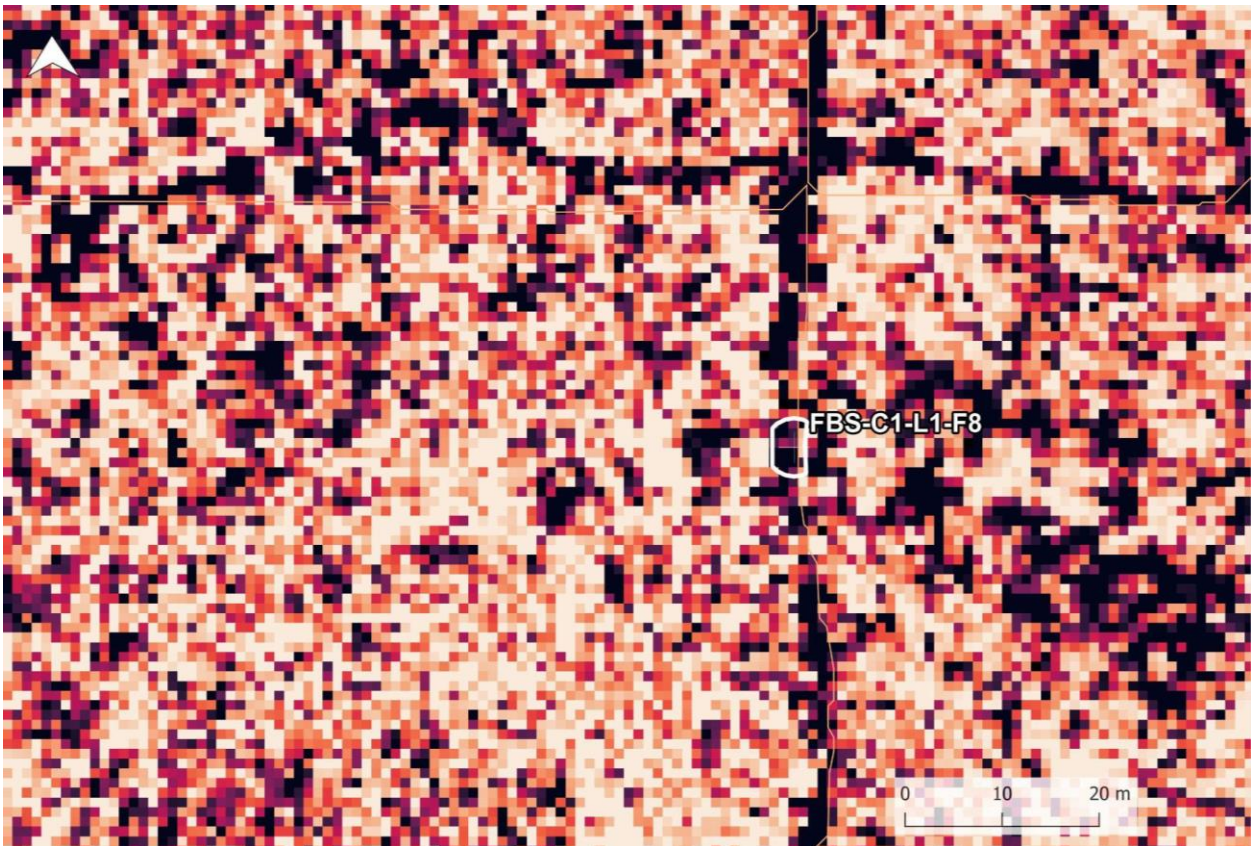
Field photo 3:



CHM Lidar:



CCE Lidar:



**360site: FBS-C2-L8-F3**

Line segment GlobalID: {1560CBFA-D123-46A1-9D45-1F0DE21F16C9}

Category: **Treatment**

Site Type: **Lowland Treed**

Feature Type: **Low Impact Seismic**

Line Length/Width/Direction: **79.01m/2.99m/south**

Wildlife Trail or Human Access: **Human Access Tracks**

Vegetation (field): **Labrador tea, black spruce, bog cranberry, bog rosemary, tamarack, alder, small bog cranberry**

Dominant Species (field): **Labrador tea**

Canopy Cover (field): **<25%**

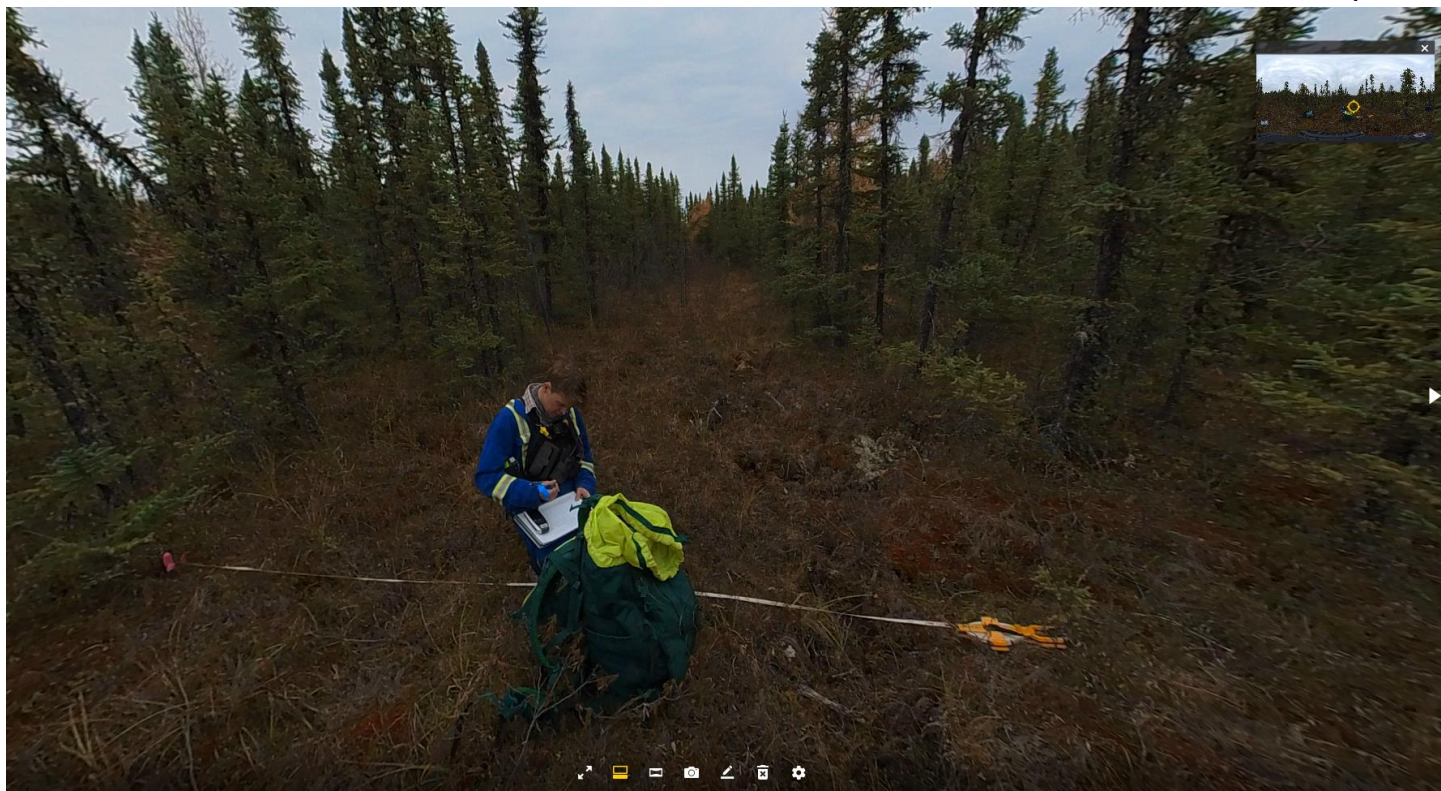
Canopy Cover Estimate (CCE - Lidar) on 360site/on the line: **14.29% / 47.18%**

Canopy Cover Estimate 500 (cce500 - Lidar) on 360site/on the line: **14.29% / 46.86%**

**Field photo 1:**



Field photo 2:



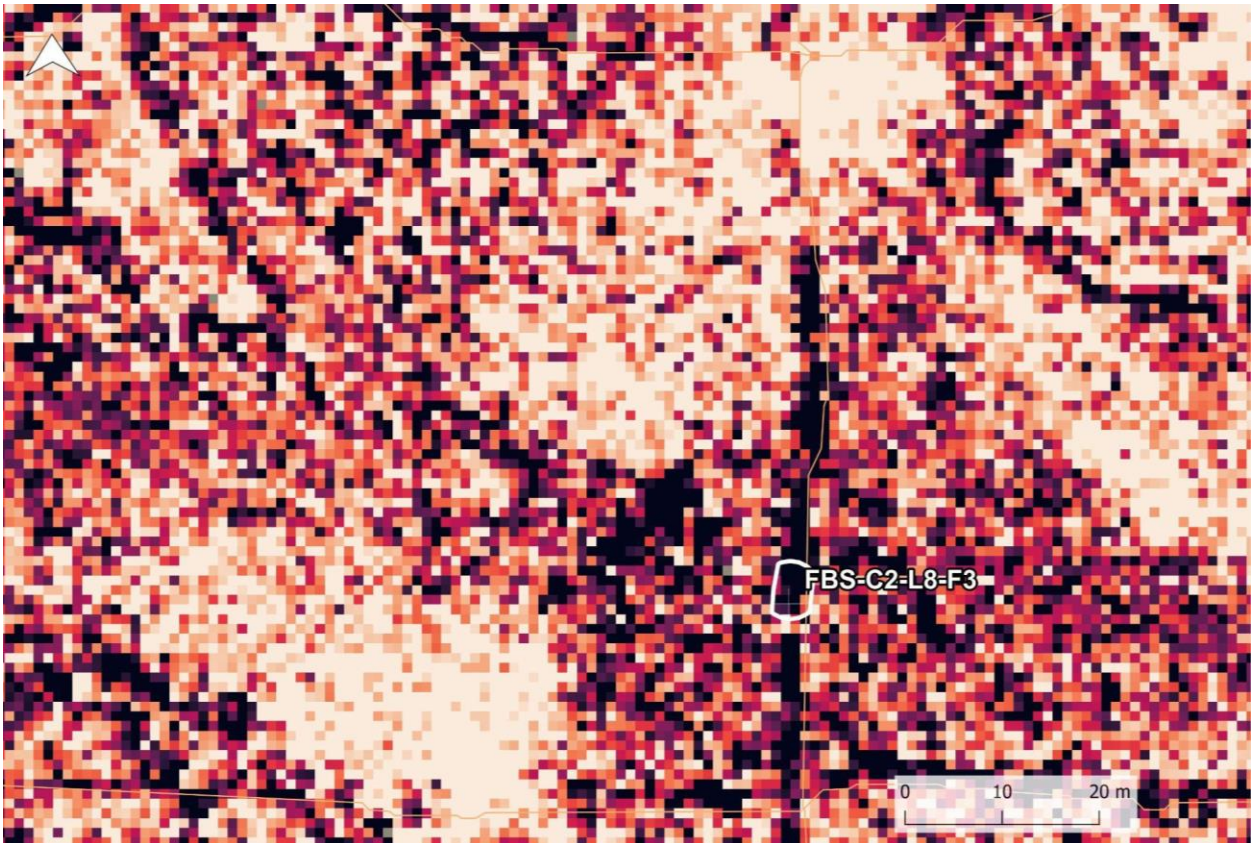
Field photo 3:



CHM Lidar:



CCE Lidar:



360site: **FBS-C2-L8-F4**

Line segment GlobalID: {31BA3A42-7FA2-47A6-8883-5C150401E66D}

Category: **Treatment**

Site Type: **Lowland Treed**

Feature Type: **Low Impact Seismic**

Line Length/Width/Direction: **76.70m/2.75m/south**

Wildlife Trail or Human Access: **None**

Vegetation (field): **salix, Labrador tea, black spruce, alder, Alaska birch, bog cranberry, bunchberry, small bog cranberry**

Dominant Species (field): **Salix**

Canopy Cover (field): **<25%**

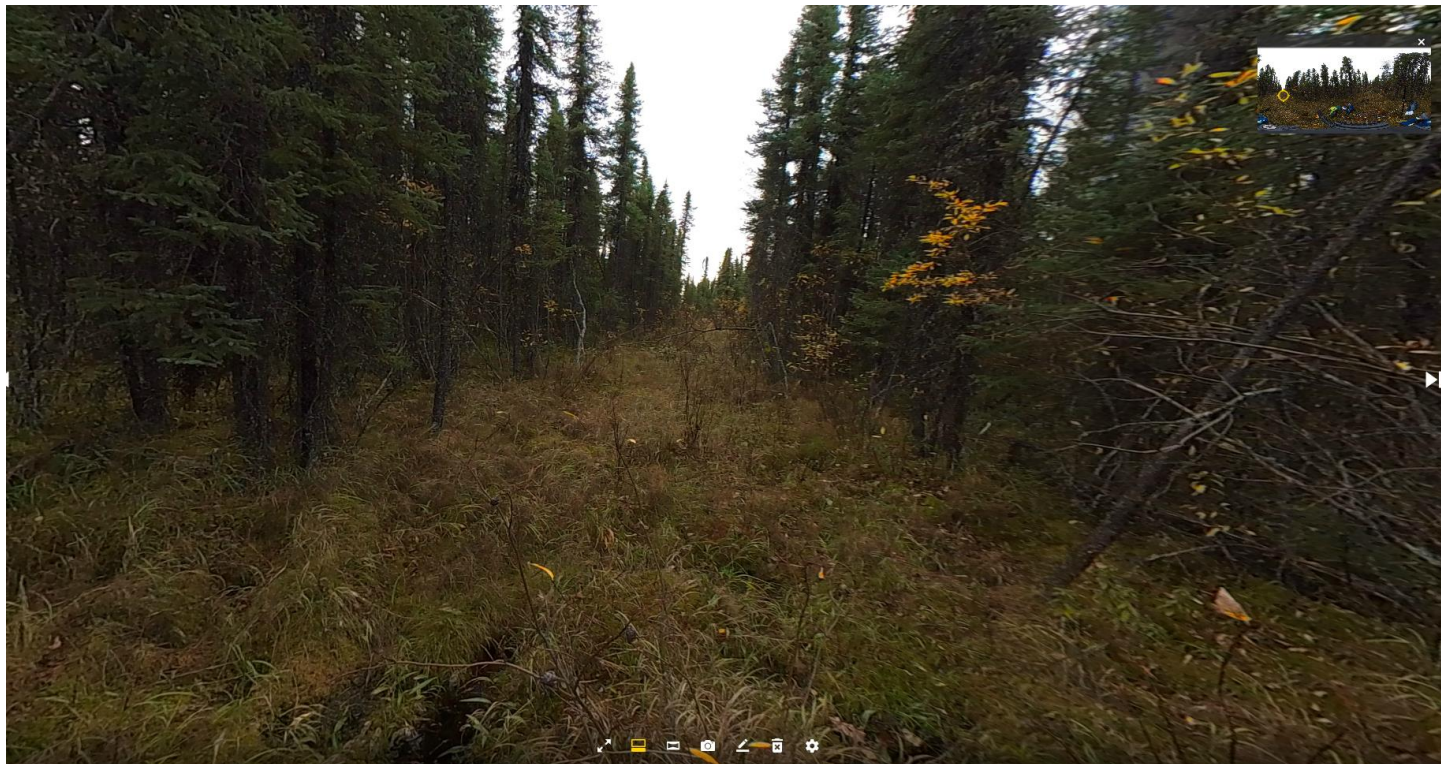
Canopy Cover Estimate (CCE - Lidar) on 360site/on the line: **30.64% / 62.64%**

Canopy Cover Estimate 500 (cce500 - Lidar) on 360site/on the line: **21.85% / 58.48%**

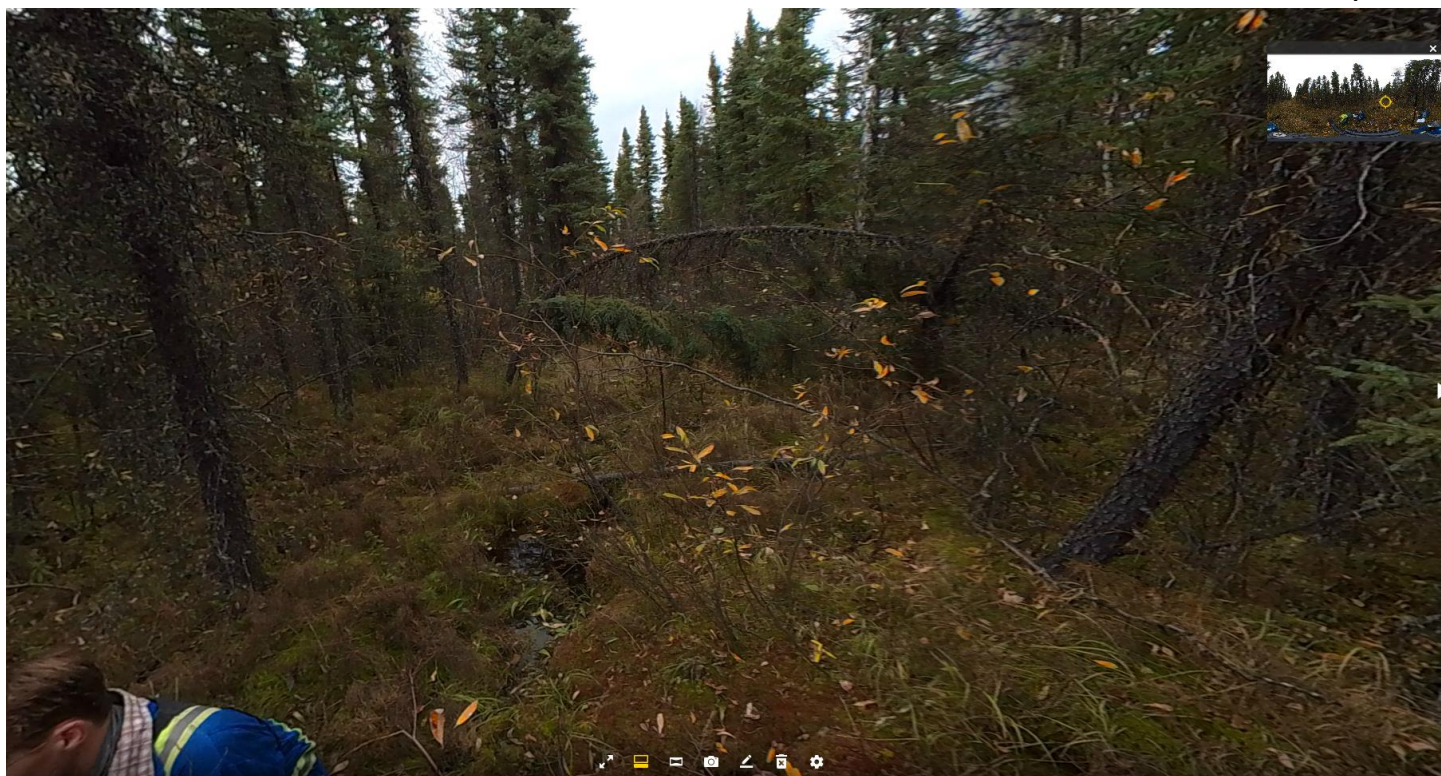
Field photo 1:



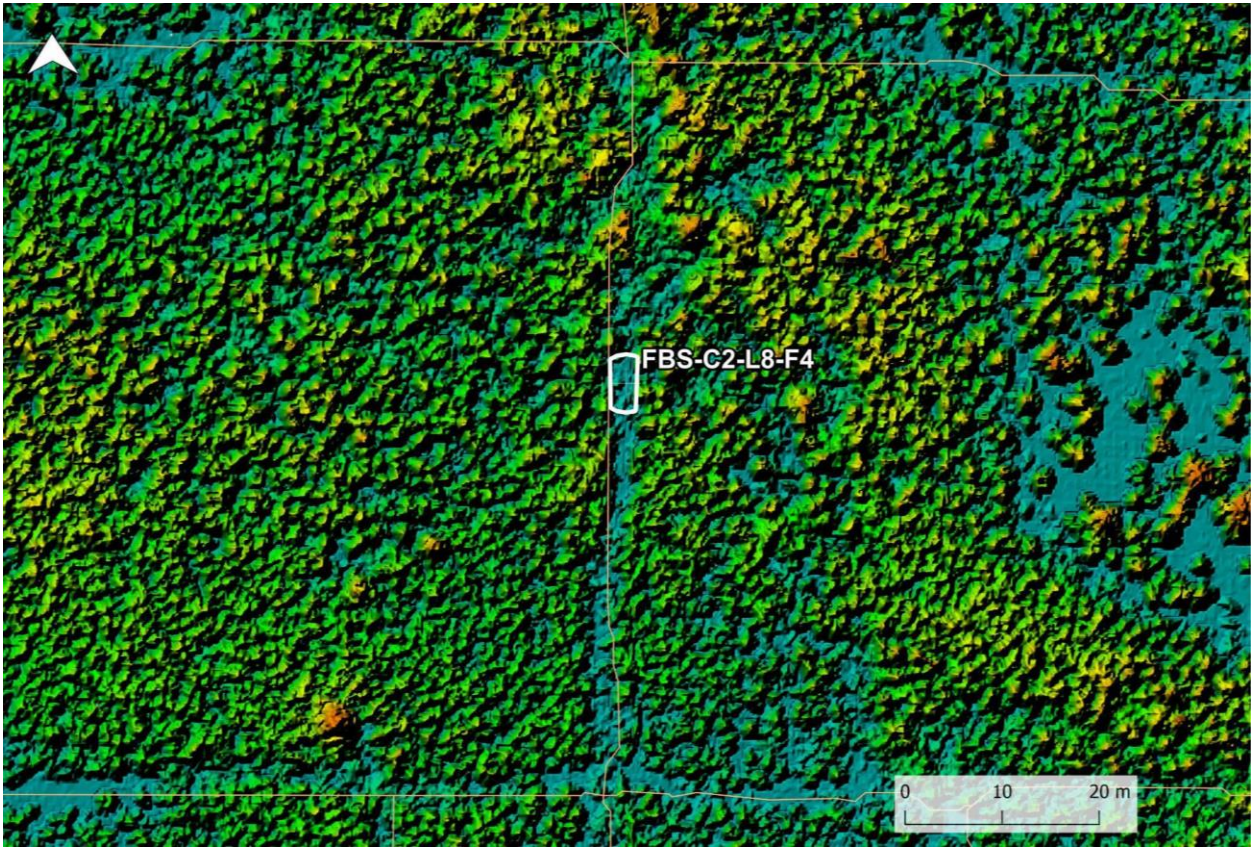
Field photo 2:



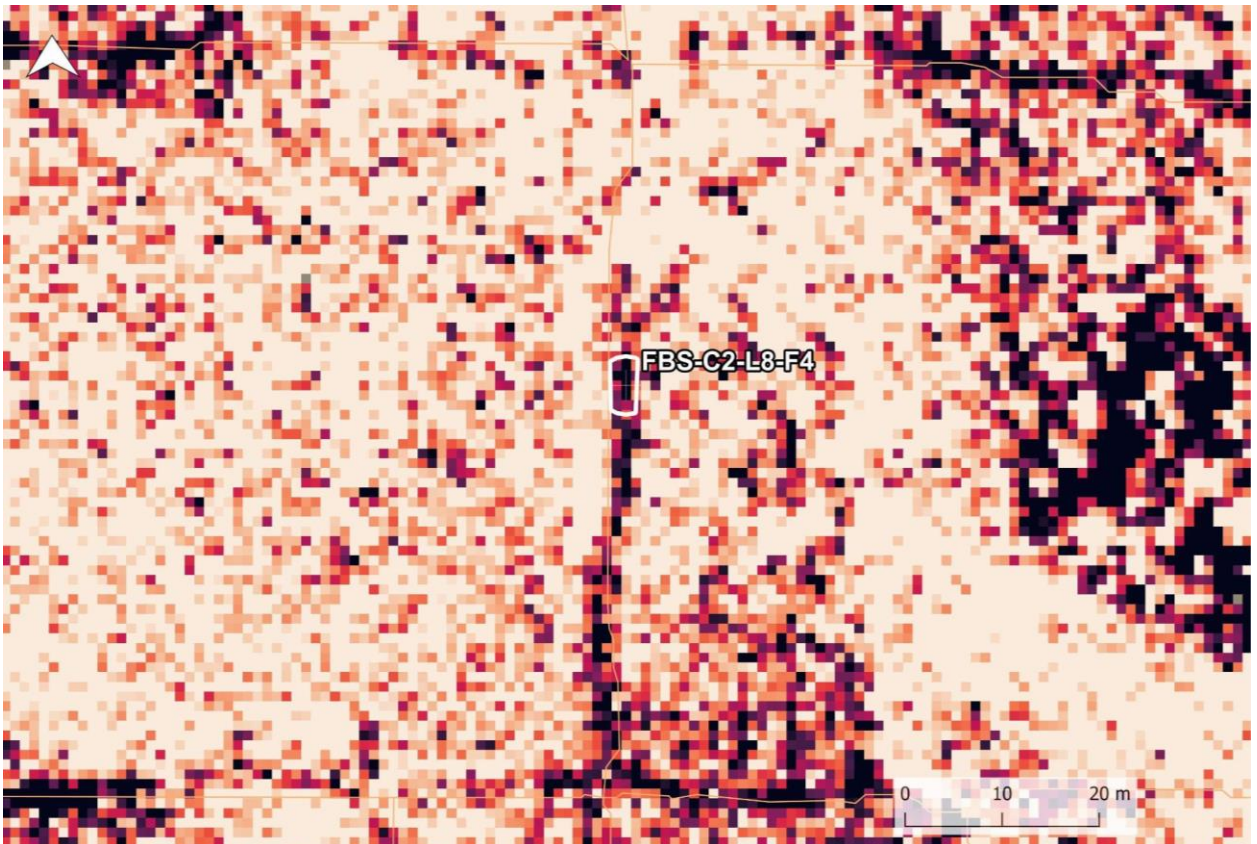
Field photo 3:



CHM Lidar:



CCE Lidar:



360site: **FBS-C2-L8-F9**

Line segment GlobalID: {2716FE4E-B654-4ACF-A030-47537D6C9F1B}

Category: **Treatment**

Site Type: **Lowland Treed**

Feature Type: **Low Impact Seismic**

Line Length/Width/Direction: **77.25m/2.75m/south**

Wildlife Trail or Human Access: **Human Access Tracks**

Vegetation (field): **Alder, salix, black spruce, palmate leaved coltsfoot, bog cranberry, Labrador tea, bishops cap, unknown species, leather leaf, river alder**

Dominant Species (field): **Alder**

Canopy Cover (field): **<25%**

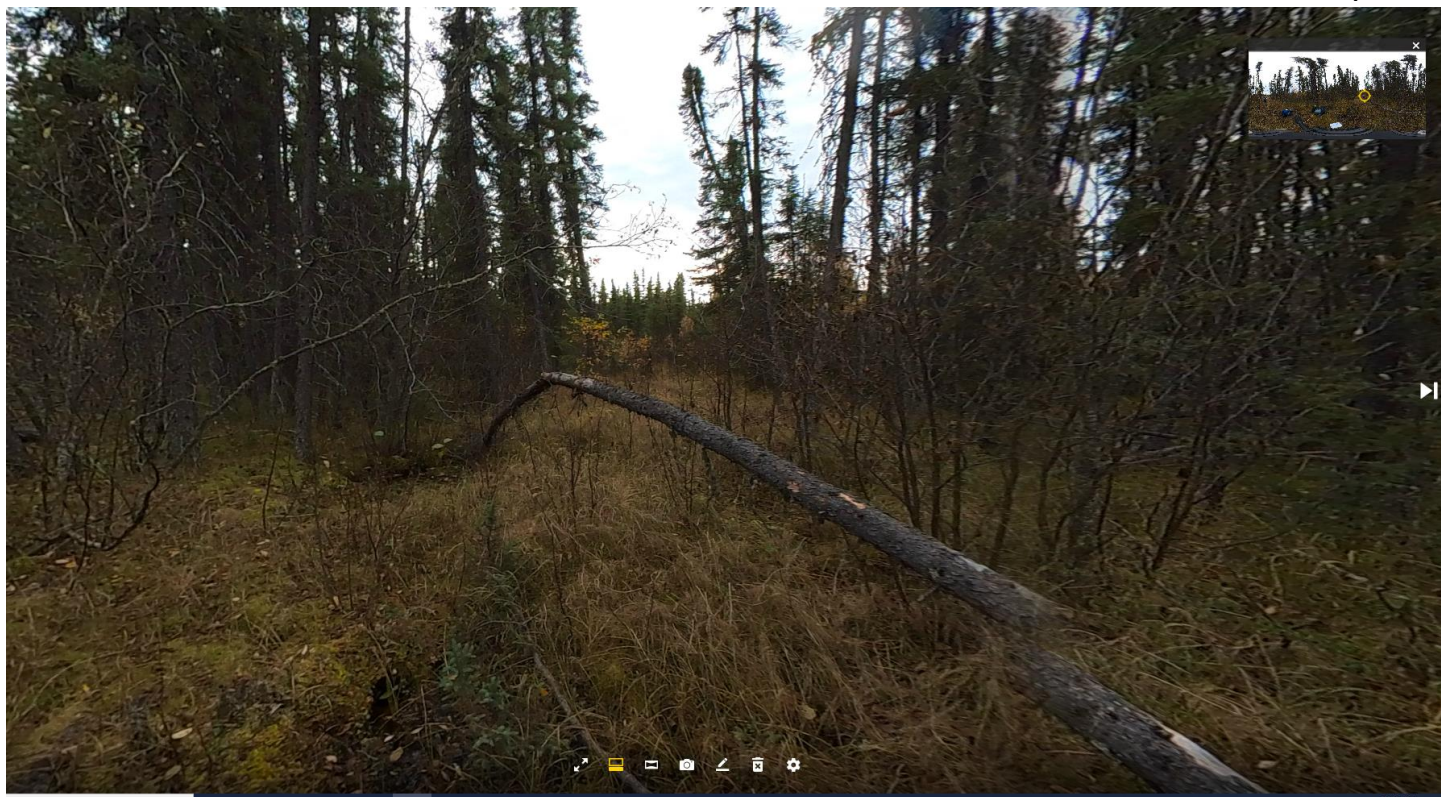
Canopy Cover Estimate (CCE - Lidar) on 360site/on the line: **35.36% / 74.85%**

Canopy Cover Estimate 500 (cce500 - Lidar) on 360site/on the line: **30.6% / 71.39%**

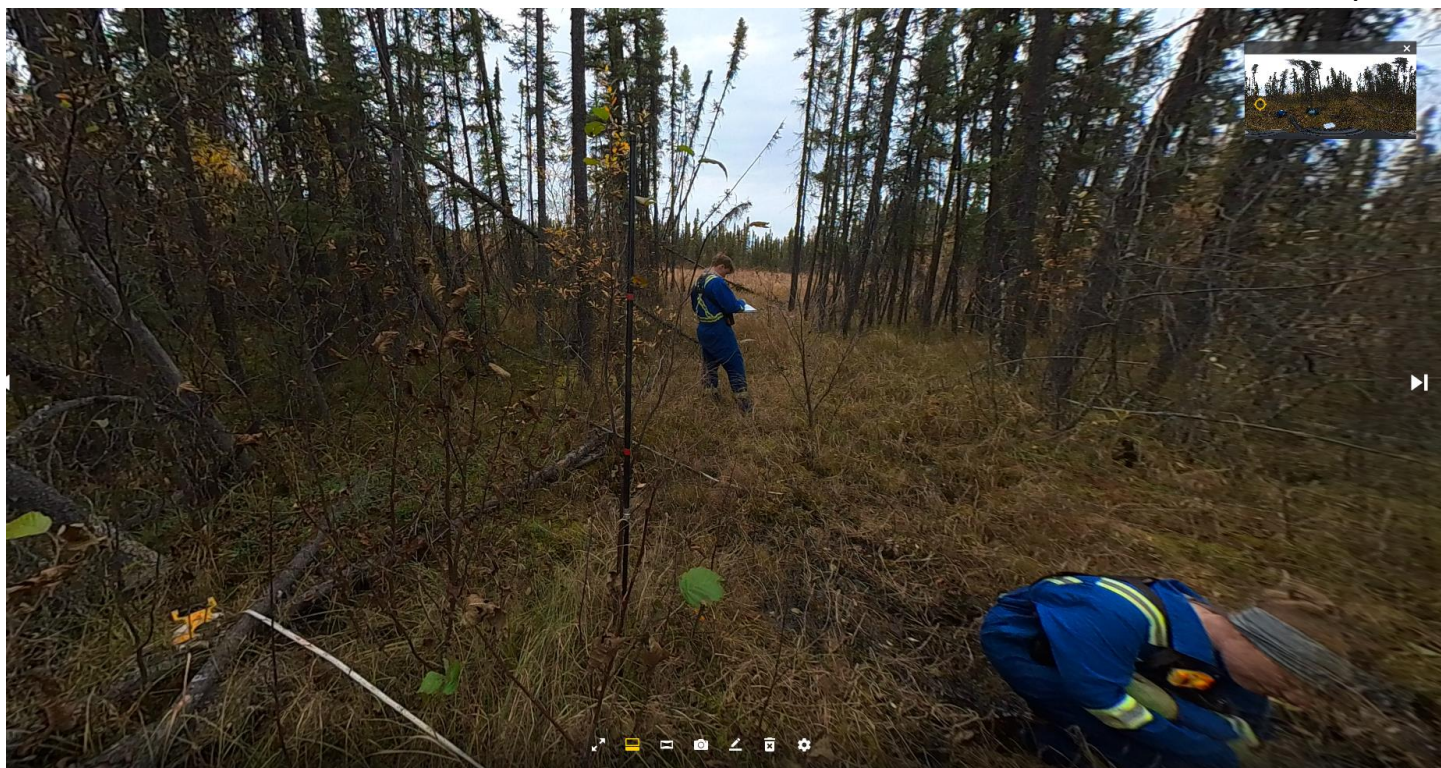
Field photo 1:



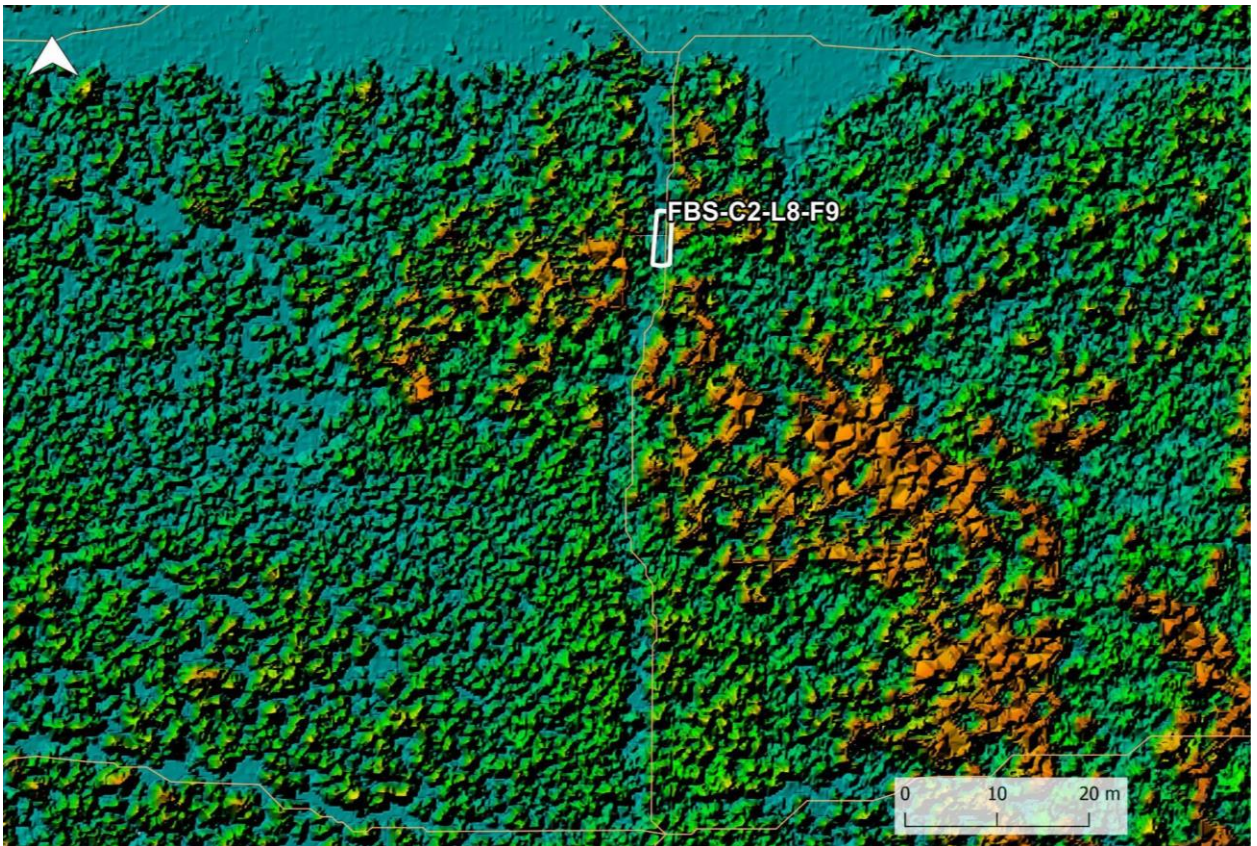
Field photo 2:



Field photo 3:



CHM Lidar:



CCE Lidar:

